

# Oct-2 (Clone EP115)

## Rabbit Monoclonal Antibody

**Specificity:** Human. Others not known

**Immunogen:** Recombinant peptide fragment within Human Oct-2

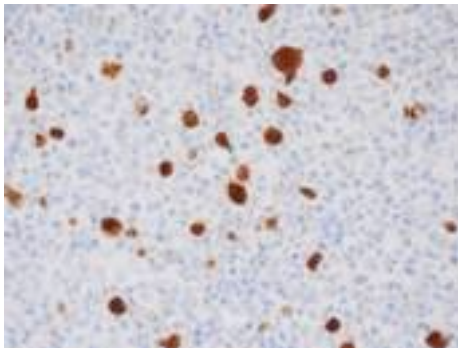
**Ig Class:** IgG

**Storage:** Store vial at 4°C. When stored at 2-8°C, this antibody is stable for 24 months

**Staining procedures:** Use formalin-fixed and paraffin-embedded sections. *Retrieval conditions:* Pretreatment of deparaffinized tissue with heat-induced epitope retrieval is recommended. *Detection methods:* Polymer anti-mouse/rabbit Ig detection system. *Working dilution:* 1:50-100; *Positive Control:* B-cell lymphoma. *Cellular Localization:* Nuclear. *Intended use:* In vitro diagnosis (IVD).

**Description:** Octamer transcription factor-2 (OCT-2) possesses a leucine zipper domain and belongs to the POU family of transcription factors. It specifically binds to the octamer motif (5-ATTTTCAT-3), activates immunoglobulin gene expression and regulates transcription in a number of tissues. OCT-2 is important for the expression of B-cell specific genes, such as CD20 and CRISP-3. OCT-2 is expressed in mature B cells, predominantly germinal center B cells. Low expression of OCT-2 has been found in immature B cells, T cells and myelomonocytic cells. OCT-2 reactivity in epithelial cells and neuronal cells has also been reported. The OCT-2 antibody labels various B-cell lymphomas with strong expression in germinal center-derived lymphomas. In a study on Hodgkin's lymphoma (HL), OCT-2 positivity has been observed in 15 out of 15 lymphocyte predominant HLs, but none of the 29 classic HLs.

**Supplied As:** Purified antibody in 0.2% BSA and 15mM sodium azide.



### References:

1. Browne P, et al. *Am J Clin Pathol.* 2003; 120:767-77.
2. García-Cosío M, et al. *Mod Pathol.* 2004; 17:1531-8.
3. Gibson SE, et al. *Am J Clin Pathol.* 2006; 126:916-24.

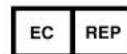
*Formalin-fixed, paraffin-embedded human T-cell rich B-cell lymphoma stained with anti-Oct-2 antibody using peroxidase-conjugate and DAB chromogen. Note nuclear staining of large lymphoma cells*

Cat. #Z2310 (1.0 ml)

**ZETA** Corporation  
65 N 1<sup>st</sup> Ave, Ste 202C  
Arcadia, CA 91006, USA  
Tel: (626) 355-2053  
<http://www.zeta-corp.com>



Zeta Corporation



**Emergo Europe B.V.**  
Prinsessegracht 20  
2514 AP The Hague  
The Netherlands  
Tel: +31 70 345 8570