

---

## NSE (Clone 5E2)

### Mouse Monoclonal Antibody

**Specificity:** Human. Others-not known

**Immunogen:** Neuron-specific enolase from human brain

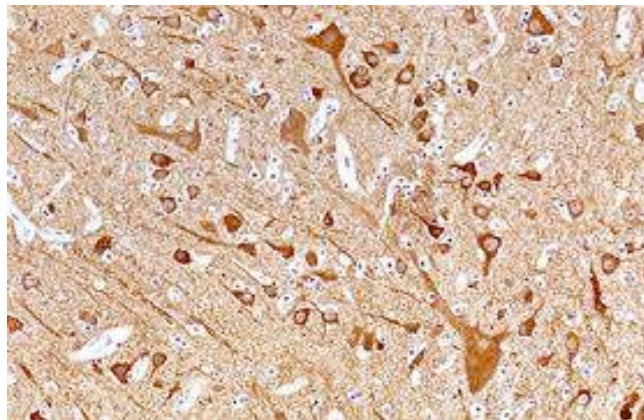
**Ig Class:** IgG<sub>2α</sub>

**Storage:** Store vial at 4°C. When stored at 2-8°C, this antibody is stable for 24 months.

**Staining procedures:** Use formalin-fixed and paraffin-embedded sections. *Retrieval conditions:* Pretreatment of deparaffinized tissue with heat-induced epitope retrieval is recommended. *Detection methods:* Polymer anti-mouse/rabbit Ig detection system. *Working dilution:* 1:50-200; *Positive Control:* Pancreas or brain. *Cellular Localization:* Cytoplasmic. *Intended Use:* In vitro diagnosis (IVD).

**Description:** Neuron-specific enolase (NSE) is the glycolytic isoenzyme of the enolase gamma-gamma dimer specifically detected in neurons of neuroendocrine cells, and their corresponding tumors. In addition, NSE has been demonstrated immunohistochemically in the non-neoplastic cells of the pituitary, peptide secreting tissues, pinealocytes, neuroendocrine cells of the lung, thyroid, parafollicular cells, adrenal medulla, islets of Langerhans, Merkel cells of the skin, and melanocytes. Anti-NSE immunostaining is also positive in normal striated muscle, hepatocytes and, to a lesser extent, smooth muscle. Anti-NSE is a useful marker to identify peripheral nerves. When used for the identification of neuroendocrine differentiation, it is necessary that it be employed in a panel with more specific markers such as anti-synaptophysin, anti-chromogranin, and anti-neurofilament.

**Supplied As:** Tissue culture supernatant with 0.2% BSA and 15mM sodium azide.

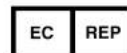
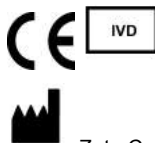


*Formalin-fixed, paraffin-embedded human brain stained with anti-NSE antibody using peroxidase-conjugate and DAB chromogen. Note cytoplasmic staining of neuronal cells*

**Cat. #Z2056 (1.0 ml)**

---

**ZETA** Corporation  
65 N 1<sup>st</sup> Ave, Ste 202C  
Arcadia, CA 91006, USA  
Tel: (626) 355-2053  
<http://www.zeta-corp.com>



**Emergo Europe B.V.**  
Prinsessegracht 20  
2514 AP The Hague  
The Netherlands  
Tel: +31 70 345 8570