
NKX3.1 (Clone EP356)

Rabbit Monoclonal Antibody

Specificity: Human. Others not tested

Immunogen: Recombinant full length protein within Human Nkx3.1 aa 1 to the C-terminus.

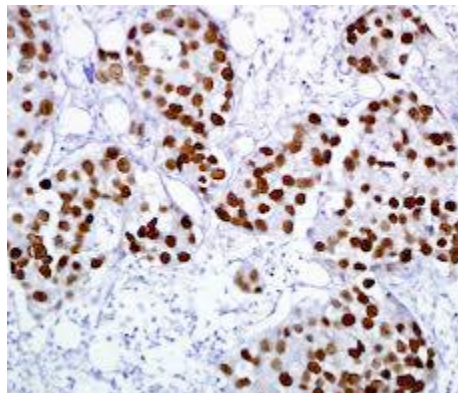
Ig Class: Rabbit IgG

Storage: Store vial at 4°C. When stored at 2-8°C, this antibody is stable for 24 months

Staining procedures: Use formalin-fixed and paraffin-embedded sections. *Retrieval conditions:* Pretreatment of deparaffinized tissue with heat-induced epitope retrieval is recommended. *Detection methods:* Polymer anti-mouse/rabbit Ig detection system. *Working dilution:* 1:50-100; *Positive Control:* Prostate. *Cellular Localization:* Nuclear. *Intended Use:* In vitro diagnosis (IVD).

Description: NKX3.1 is a member of the NK-3 homeobox family and has several isoforms. It is a putative transcription factor and may act as a transcriptional repressor that exhibits prostate and testis specific expression. It may play a role in proliferation of glandular epithelium and in formation of ducts in the prostate. The sensitivity of NKX3.1 for identifying metastatic prostatic adenocarcinomas was 98%. NKX3.1 antibody, used in combination with protein, may represent a superior combination to aid in identifying tumors of prostatic origin.

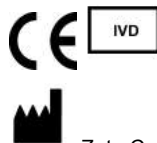
Supplied As: Tissue culture supernatant with 0.2% BSA and 15mM sodium azide.



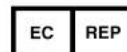
Formalin-fixed, paraffin-embedded prostate adenocarcinoma stained with anti-NKX3.1 antibody using peroxidase-conjugate and DAB chromogen. Note nuclear staining of tumor cells

Cat. #Z2285 (1.0 ml)

ZETA Corporation
65 N 1st Ave, Ste 202C
Arcadia, CA 91006, USA
Tel: (626) 355-2053
<http://www.zeta-corp.com>



Zeta Corporation



Emergo Europe B.V.
Prinsessegracht 20
2514 AP The Hague
The Netherlands
Tel: +31 70 345 8570