
NKX2.2 (Clone EP336)

Rabbit Monoclonal Antibody

Specificity: Mouse, Rat, Chicken, Human

Immunogen: Recombinant full-length protein corresponding to human Nkx2.2 aa 1-273

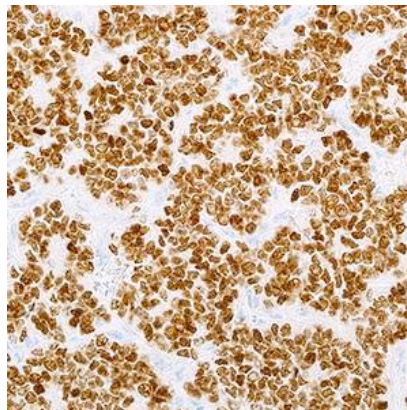
Ig Class: Rabbit IgG

Storage: Store vial at 4° C. When stored at 2-8° C, this antibody is stable for 24 months

Staining procedures: Use formalin-fixed and paraffin-embedded sections. *Retrieval conditions:* Pretreatment of deparaffinized tissue with heat-induced epitope retrieval is recommended. *Detection methods:* Polymer anti-mouse/rabbit Ig detection system. *Working dilution:* 1:50-250; *Positive Control:* Ewing's sarcoma. *Cellular Localization:* Nuclear. *Intended Use:* In vitro diagnosis (IVD).

Description: NKX2.2 is a homeodomain transcription factor that plays a role in neuroendocrine and glial differentiation. NKX2.2 is upregulated in Ewing's sarcoma as a result of the oncogenic EWS-FLI1 fusion protein. As one of many small round blue cell tumors, Ewing's sarcoma can be difficult to diagnose due to the characteristic undifferentiated morphology. NKX2.2 has proven its utility as a sensitive maker for distinguishing Ewing's sarcoma from other round blue cell tumors when used in a panel.

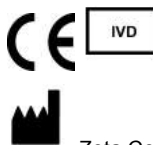
Supplied As: Purified antibody fraction from rabbit anti-serum with 0.2% BSA and 15mM sodium azide.



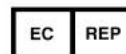
Formalin-fixed, paraffin-embedded human Ewing's sarcoma stained with anti-NKX2.2 antibody using peroxidase-conjugate and DAB chromogen. Note nuclear staining of tumor cells

Cat. #Z2322 (1.0 ml)

ZETA Corporation
65 N 1st Ave, Ste 202C
Arcadia, CA 91006, USA
Tel: (626) 355-2053
<http://www.zeta-corp.com>



Zeta Corporation



Emergo Europe B.V.
Prinsessegracht 20
2514 AP The Hague
The Netherlands
Tel: +31 70 345 8570