
Myosin, Smooth Muscle (Clone SMMS-1) Mouse Monoclonal Antibody

Specificity: Human. Others not known

Immunogen: Crude human uterus extract

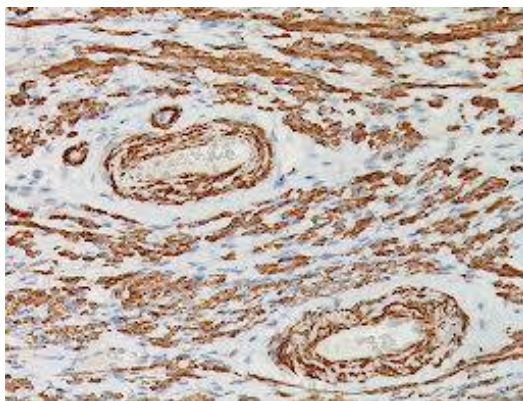
Ig Class: IgG1/ κ

Storage: Store vial at 4°C. When stored at 2-8°C, this antibody is stable for 24 months

Staining procedures: Use formalin-fixed and paraffin-embedded sections. *Retrieval conditions:* Pretreatment of deparaffinized tissue with heat-induced epitope retrieval is recommended. *Detection methods:* Polymer anti-mouse/rabbit Ig detection system. *Working dilution:* 1:50-200; *Positive Control:* transitional cell carcinoma. *Cellular Localization:* nuclear. *Intended Use:* In vitro diagnosis (IVD).

Description: SMMS-1 is an antibody to smooth muscle myosin, heavy chain that reacts with human visceral and vascular smooth muscle cells. The antibody also reacts with human myoepithelial cells. It is very helpful in distinguishing between benign sclerosing breast lesions and infiltrating carcinomas in difficult cases since it strongly stains the myoepithelial layer in the benign lesions while it is negative in the infiltrating carcinomas.

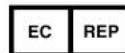
Supplied As: Purified antibody in 0.2% BSA and 15mM sodium azide.



Formalin-fixed, paraffin-embedded human colon wall stained with anti-SMMH antibody using peroxidase-conjugate and DAB chromogen. Note cytoplasmic staining of smooth muscle and vessel wall

Cat. #Z2229 (1.0 ml)

ZETA Corporation
65 N 1st Ave, Ste 202C
Arcadia, CA 91006, USA
Tel: (626) 355-2053
<http://www.zeta-corp.com>



Zeta Corporation

Emergo Europe B.V.
Prinsessegracht 20
2514 AP The Hague
The Netherlands
Tel: +31 70 345 8570