

Myoglobin

Rabbit Polyclonal Antibody

Specificity: Human. Others-not known

Immunogen: Purified myoglobin from human heart

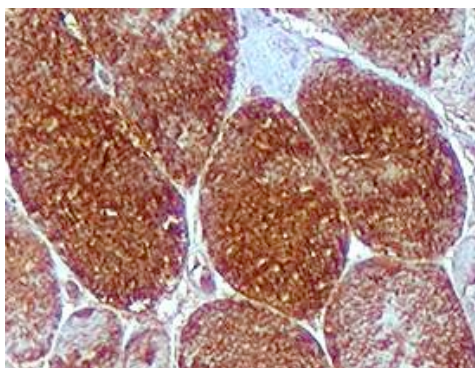
Ig Class: Rabbit IgG

Storage: Store vial at 4°C. When stored at 2-8°C, this antibody is stable for 24 months

Staining procedures: Use formalin-fixed and paraffin-embedded sections. *Retrieval conditions:* Pretreatment of deparaffinized tissue with heat-induced epitope retrieval is recommended. *Detection methods:* Polymer anti-mouse/rabbit Ig detection system. *Working dilution:* 1:150-300; *Positive Control:* Skeletal muscle. *Cellular Localization:* Cytoplasmic. *Intended Use:* In vitro diagnosis (IVD).

Description: Myoglobin is a cytoplasmic, single chain polypeptide of 153 amino acids and contains a single heme group. Myoglobin is found in skeletal and cardiac muscle but not in smooth muscle and functions as an oxygen transporting pigment. Upon damage to the muscle cell due to infarction of a coronary artery, neurological trauma, infection of tumor processes, myoglobin escapes to the environment and can be found in plasma using sensitive assays.

Supplied As: Purified antibody with 0.2% BSA and 15mM sodium azide.



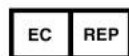
Formalin-fixed, paraffin-embedded human skeletal muscle stained with anti-myoglobin antibody using peroxidase-conjugate and DAB chromogen. Note the cytoplasmic staining of skeletal muscle fibers

Cat. #Z2126 (1.0 ml)

ZETA Corporation
65 N 1st Ave, Ste 202C
Arcadia, CA 91006, USA
Tel: (626) 355-2053
<http://www.zeta-corp.com>



Zeta Corporation



Emergo Europe B.V.
Prinsessegracht 20
2514 AP The Hague
The Netherlands
Tel: +31 70 345 8570