
Myogenin (Clone F5D) Mouse Monoclonal Antibody

Specificity: Human, mouse, rat, and cat. Does not react with quail. Others not known

Immunogen: Recombinant protein containing rat myogenin aa 30-224

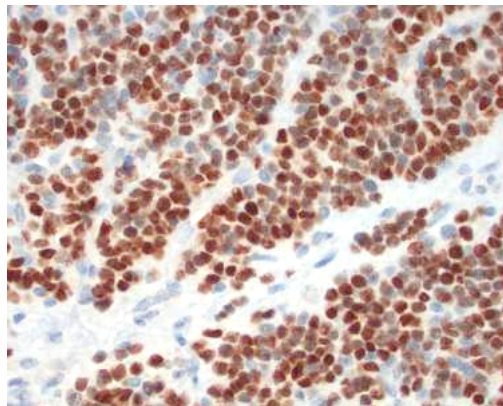
Ig Class: IgG1/ κ

Storage: Store vial at 4°C. When stored at 2-8°C, this antibody is stable for 24 months

Staining procedures: Use formalin-fixed and paraffin-embedded sections. *Retrieval conditions:* Pretreatment of deparaffinized tissue with heat-induced epitope retrieval is recommended. *Detection methods:* Polymer anti-mouse/rabbit Ig detection system. *Working dilution:* 1:100-200; *Positive Control:* Rhabdomyosarcoma or Wilm's tumors. *Cellular Localization:* Nuclear. *Intended Use:* In vitro diagnosis (IVD).

Description: Myogenin is a member of a family of myogenic regulatory genes, which includes MyoD, myf5 and MRF4. These genes encode a set of transcription factors, which are essential for muscle development. Transfection of myogenin into multipotential mesodermal cells have been shown to convert the mesodermal cells to myoblasts. Expression of myogenin is restricted to cells of skeletal muscle origin. It is therefore a useful marker for tumors of the muscle lineage, being strongly expressed in alveolar rhabdomyosarcomas.

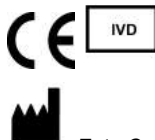
Supplied As: Antibody purified from the ascites fluid by Protein G chromatography in 0.2% BSA and 15mM sodium azide.



Formalin-fixed, paraffin-embedded human rhabdomyosarcoma stained with anti-myogenin antibody using peroxidase-conjugate and DAB chromogen. Note nuclear staining of tumor cells

Cat. #Z2054 (1.0 ml)

ZETA Corporation
65 N 1st Ave, Ste 202C
Arcadia, CA 91006, USA
Tel: (626) 355-2053
<http://www.zeta-corp.com>



Zeta Corporation



Emergo Europe B.V.
Prinsessegracht 20
2514 AP The Hague
The Netherlands
Tel: +31 70 345 8570