

---

# Myeloperoxidase (Clone EP151)

## Rabbit Monoclonal Antibody

**Specificity:** Human, Mouse, and Rat. Others-not known

**Immunogen:** A synthetic peptide corresponding to residues near the C terminus of human myeloperoxidase

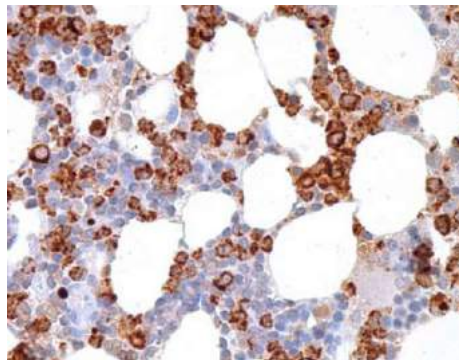
**Ig Class:** Rabbit IgG

**Storage:** Store vial at 4°C. When stored at 2-8°C, this antibody is stable for 24 months

**Staining procedures:** Use formalin-fixed and paraffin-embedded sections. *Retrieval conditions:* Pretreatment of deparaffinized tissue with heat-induced epitope retrieval is recommended. *Detection methods:* Polymer anti-mouse/rabbit Ig detection system. *Working dilution:* 1:50-100; *Positive Control:* Spleen. *Cellular Localization:* Cytoplasmic. *Intended Use:* In vitro diagnosis (IVD).

**Description:** Myeloperoxidase is an important enzyme used by granulocytes during phagocytic lysis of foreign particles engulfed. In normal tissues and in a variety of myeloproliferative disorders myeloid cells of both neutrophilic and eosinophilic types, at all stages of maturation, exhibit strong cytoplasmic reactivity for MPO. Erythroid precursors, megakaryocytes, lymphoid cells, mast cells, and plasma cells are nonreactive. MPO is not observed in the neoplastic cells of a wide variety of epithelial tumors and sarcomas. MPO is useful in differentiating between myeloid and lymphoid leukemias.

**Supplied As:** Purified antibody with 0.2% BSA and 15mM sodium azide.



*Formalin-fixed, paraffin-embedded human bone marrow stained with anti-myeloperoxidase antibody using peroxidase-conjugate and DAB chromogen. Note the cytoplasmic staining of myeloid cells*

Cat. #Z2296 (1.0 ml)

---

**ZETA** Corporation  
65 N 1<sup>st</sup> Ave, Ste 202C  
Arcadia, CA 91006, USA  
Tel: (626) 355-2053  
<http://www.zeta-corp.com>



Zeta Corporation



**Emergo Europe B.V.**  
Prinsessegracht 20  
2514 AP The Hague  
The Netherlands  
Tel: +31 70 345 8570