
Myelin Basic Protein Rabbit Polyclonal Antibody

Specificity: Human. Others-not known

Immunogen: Myelin basic protein isolated from human brain

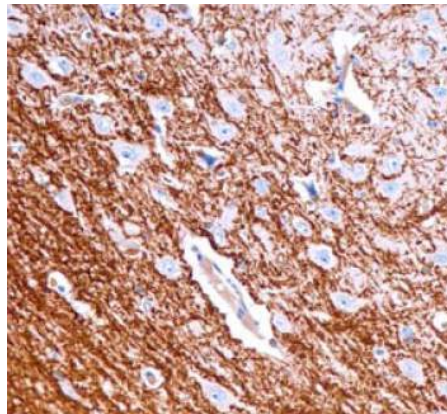
Ig Class: Rabbit IgG

Storage: Store vial at 4°C. When stored at 2-8°C, this antibody is stable for 24 months

Staining procedures: Use formalin-fixed and paraffin-embedded sections. *Retrieval conditions:* Pretreatment of deparaffinized tissue with heat-induced epitope retrieval is recommended. *Detection methods:* Polymer anti-mouse/rabbit Ig detection system. *Working dilution:* 1:50-200; *Positive Control:* Brain. *Cellular Localization:* Cytoplasmic. *Intended Use:* In vitro diagnosis (IVD).

Description: Myelin basic protein accounts for about 30 per cent of the proteins in myelin from the central nervous system. It is best known for its capacity to induce experimental allergic encephalomyelitis (EAE), a T-lymphocyte mediated disease due to delayed-type hypersensitivity; though each animal species appears to respond to a different fragment of the 170 amino acid polypeptide. Myelin basic protein is expressed in oligodendrocytes, myelin of white matter in the brain and spinal cord and in peripheral nerves.

Supplied As: Purified antibody with 0.2% BSA and 15mM sodium azide.



Formalin-fixed, paraffin-embedded human brain white mater stained with anti-MBP antibody using peroxidase-conjugate and DAB chromogen. Note the cytoplasmic staining of glial cells

Cat. #Z2190 (1.0 ml)

ZETA Corporation
65 N 1st Ave, Ste 202C
Arcadia, CA 91006, USA
Tel: (626) 355-2053
<http://www.zeta-corp.com>



Zeta Corporation



Emergo Europe B.V.
Prinsessegracht 20
2514 AP The Hague
The Netherlands
Tel: +31 70 345 8570