

---

# Mesothelin (Clone EP140)

## Rabbit Monoclonal Antibody

**Specificity:** Human

**Immunogen:** Recombinant peptide corresponding to residues in human mesothelin

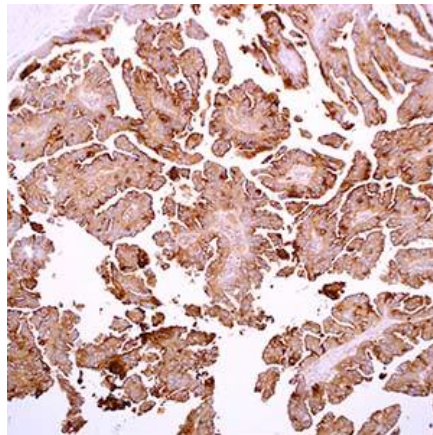
**Ig Class:** Rabbit IgG

**Storage:** Store vial at 4° C. When stored at 2-8° C, this antibody is stable for 24 months

**Staining procedures:** Use formalin-fixed and paraffin-embedded sections. *Retrieval conditions:* Pretreatment of deparaffinized tissue with heat-induced epitope retrieval is recommended. *Detection methods:* Polymer anti-mouse/rabbit Ig detection system. *Working dilution:* 1:50-100; *Positive Control:* Mesothelioma. *Cellular Localization:* Cytoplasmic. *Intended Use:* In vitro diagnosis (IVD).

**Description:** The mesothelin gene encodes a 69-kDa precursor protein that is processed to a 40-kDa glycosylphosphatidylinositol (GPI)-anchored protein, the mature mesothelin, present on the cell surface. Its biological function is not known, but recent studies have shown that it forms a strong and specific complex with MUC16; a binding which has been suggested to be the basis of ovarian cancer metastasis. Mesothelin is present on normal mesothelial cells lining the pleura, peritoneum, and pericardium. In tumors, overexpression of mesothelin has been observed in mesotheliomas, and other tumors including ovarian, pancreatic carcinomas, and cholangiocarcinoma. By using immunotoxin targeting immunotherapy, mesothelin has also been reported as a new therapeutic target in various types of cancers, such as human cholangiocarcinoma.

**Supplied As:** Purified antibody fraction from rabbit anti-serum with 0.2% BSA and 15mM sodium azide.

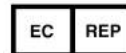


*Formalin-fixed, paraffin-embedded human mesothelioma stained with anti-mesothelin antibody using peroxidase-conjugate and DAB chromogen. Note cytoplasmic staining of tumor cells*

**Cat. #Z2326 (1.0 ml)**

---

**ZETA** Corporation  
65 N 1<sup>st</sup> Ave, Ste 202C  
Arcadia, CA 91006, USA  
Tel: (626) 355-2053  
<http://www.zeta-corp.com>



Zeta Corporation

**Emergo Europe B.V.**  
Prinsessegracht 20  
2514 AP The Hague  
The Netherlands  
Tel: +31 70 345 8570