

---

## Mesothelial Cell (Clone HBME1) Mouse Monoclonal Antibody

**Specificity:** Human. Others not known

**Immunogen:** A suspension of mesothelioma cells of human origin

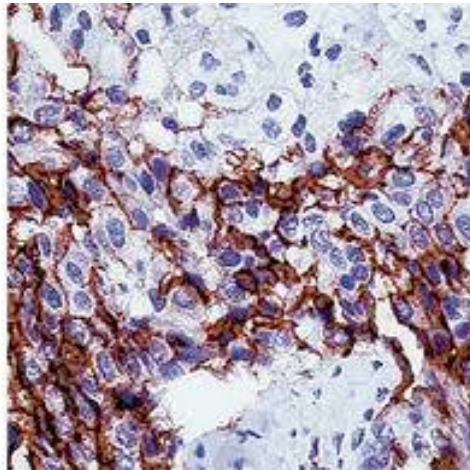
**Ig Class:** IgG1

**Storage:** Store vial at 4°C. When stored at 2-8°C, this antibody is stable for 24 months

**Staining procedures:** Use formalin-fixed and paraffin-embedded sections. *Retrieval conditions:* Pretreatment of deparaffinized tissue with heat-induced epitope retrieval is recommended. *Detection methods:* Polymer anti-mouse/rabbit Ig detection system. *Working dilution:* 1:25-100; *Positive Control:* Mesothelioma. *Cellular Localization:* Cytoplasmic. *Intended Use:* In vitro diagnosis (IVD).

**Description:** HBME-1 is an antimesothelial monoclonal antibody that recognizes an unknown antigen on microvilli of mesothelioma cells. It stains normal mesothelial cells as well as epithelial mesotheliomas in a thick membrane pattern. This antibody also reacts with some (20-30%) carcinomas showing cytoplasmic immunostaining.

**Supplied As:** Purified antibody in 0.2% BSA and 15mM sodium azide.



*Formalin-fixed, paraffin-embedded human mesothelioma stained with anti-HBME1 antibody using peroxidase-conjugate and DAB chromogen. Note cytoplasmic staining of tumor cells*

**Cat. #Z2233 (1.0 ml)**

---

**ZETA** Corporation  
65 N 1<sup>st</sup> Ave, Ste 202C  
Arcadia, CA 91006, USA  
Tel: (626) 355-2053  
<http://www.zeta-corp.com>



Zeta Corporation



**Emergo Europe B.V.**  
Prinsessegracht 20  
2514 AP The Hague  
The Netherlands  
Tel: +31 70 345 8570