

---

# Mammaglobin Cocktail (Clones 304-1A5+ZM193)

## Mouse Monoclonal Antibodies

**Specificity:** Human. Others-not known.

**Immunogen:** Recombinant full-length human mammaglobin protein

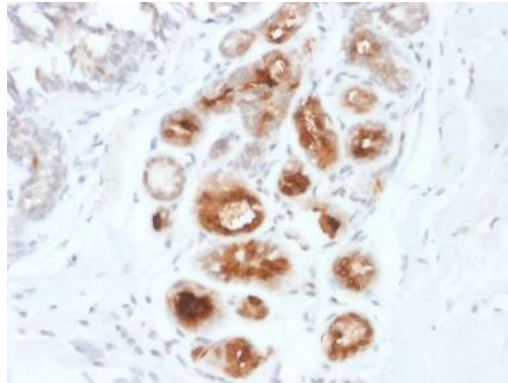
**Ig Class:** IgG1 + IgG1/ $\kappa$

**Storage:** Store at 2-8°C for up to 2 years for concentrate form and 1 year for prediluted form.

**Staining procedures:** Use formalin-fixed and paraffin-embedded sections. *Retrieval conditions:* Pretreatment of deparaffinized tissue with heat-induced epitope retrieval is recommended. *Detection methods:* Polymer anti-mouse/rabbit Ig detection system. *Working dilution:* 1:100. *Positive control:* Normal or neoplastic breast tissue. *Cellular localization:* Cytoplasmic; *Intended use:* In vitro Diagnosis (IVD).

**Description:** Mammaglobin is a 93 amino acid glycoprotein with homology to other secretoglobin-uteroglobin family members. It was originally identified as a breast cancer restricted biomarker by differential screening. Mammaglobin related to secretoglobin family that includes human uteroglobin and lipophilin. Mammaglobin antibody stains cytoplasm of normal breast epithelial cells as well as primary and metastatic breast carcinomas. Mammaglobin expression is absent in prostate, kidney, colon, rectum, small intestine, stomach, pancreas, lung, and thyroid tissues. Mammaglobin may be used as part of an immunohistochemical panel for determination of metastatic breast carcinoma and tumor of unknown primary origin.

**Supplied As:** Purified antibody in PBS buffer with 0.2% BSA and 15mM sodium azide.



*Formalin-fixed, paraffin-embedded human breast carcinoma stained with anti-mammaglobin antibody cocktail using peroxidase-conjugate and DAB chromogen. Note cytoplasmic staining of tumor glands*

Cat. # 2517 (1.0 ml)

---

**ZETA** Corporation  
65 N 1<sup>st</sup> Ave, Ste 202C  
Arcadia, CA 91006, USA  
Tel: (626) 355-2053  
<http://www.zeta-corp.com>



Zeta Corporation



**Emergo Europe B.V.**  
Prinsessegracht 20  
2514 AP The Hague  
The Netherlands  
Tel: +31 70 345 8570