
MUM1 Protein (Clone ZR46, also known as MRQ-43) Rabbit Monoclonal Antibody

Specificity: Human. Others not tested

Immunogen: Synthetic peptide near C-terminus of human MUM1/IRF4

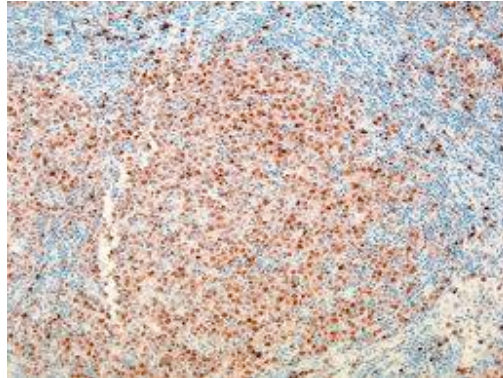
Ig Class: Rabbit IgG

Storage: Store vial at 4°C. When stored at 2-8°C, this antibody is stable for 24 months

Staining procedures: Use formalin-fixed and paraffin-embedded sections. *Retrieval conditions:* Pretreatment of deparaffinized tissue with heat-induced epitope retrieval is recommended. *Detection methods:* Polymer anti-mouse/rabbit Ig detection system. *Working dilution:* 1:50-200; *Positive Control:* Tonsil or diffuse large B-cell lymphoma. *Cellular Localization:* Nuclear and cytoplasmic. *Intended Use:* In vitro diagnosis (IVD).

Description: Multiple myeloma oncogene-1 (MUM1) is a 50kD protein encoded by the *MUM1* gene. This antibody stains MUM1 protein, which is expressed in a subset of B cells in the light zone of the germinal center, plasma cells, activated T cells and a wide spectrum of related hematolymphoid neoplasms. This antibody is useful in the sub classification of lymphoid malignancies.

Supplied As: Purified antibody with 0.2% BSA and 15mM sodium azide.



Formalin-fixed, paraffin-embedded human diffuse large B-cell lymphoma stained with anti-MUM1 antibody using peroxidase-conjugate and DAB chromogen. Note the nuclear staining in lymphoma cells

Cat. #Z2253 (1.0 ml)

ZETA Corporation
65 N 1st Ave, Ste 202C
Arcadia, CA 91006, USA
Tel: (626) 355-2053
<http://www.zeta-corp.com>



Zeta Corporation



Emergo Europe B.V.
Prinsessegracht 20
2514 AP The Hague
The Netherlands
Tel: +31 70 345 8570