
MUC-6 (Clone ZM38, also known as MRQ-20)

Mouse Monoclonal Antibody

Specificity: Human. Others-not known

Immunogen: Recombinant human MUC56 protein

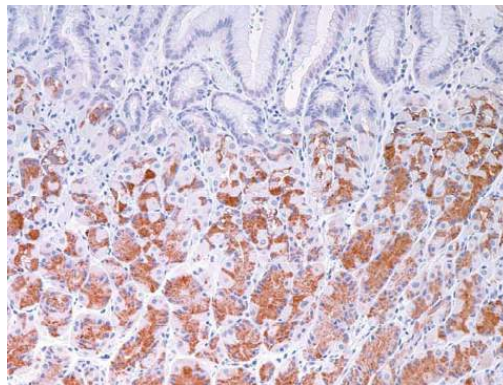
Ig Class: IgG_{1k}

Storage: Store vial at 4°C. When stored at 2-8°C, this antibody is stable for 24 months

Staining procedures: Use formalin-fixed and paraffin-embedded sections. *Retrieval conditions:* Pretreatment of deparaffinized tissue with heat-induced epitope retrieval is recommended. *Detection methods:* Polymer anti-mouse/rabbit Ig detection system. *Working dilution:* 1:50-200; *Positive Control:* Stomach. *Cellular Localization:* Cytoplasmic. *Intended Use:* In vitro diagnosis (IVD).

Description: Mucin 6 (Muc-6 Glycoprotein). Mucins are heavily glycosylated glycoproteins, which constitute the major components of mucus which cover the surface of epithelial tissues. Nine distinct epithelial mucin genes (Muc-1, 2, 3, 4, 5AC, 5B, 6,7 and 8) have been identified. Various immunohistochemical and in situ hybridization studies have shown that these mucins are differentially expressed in epithelia with cell-type specificity. Muc-5AC and Muc-6 glycoproteins are the first two mucins found in superficial epithelium and Muc-6 glycoprotein is found in the deep glands.

Supplied As: Purified antibody with 0.2% BSA and 15mM sodium azide.



Formalin-fixed, paraffin-embedded human gastric mucosa stained with anti-MUC-6 antibody using peroxidase-conjugate and DAB chromogen. Note the cytoplasmic staining of glandular cells

Cat. #Z2163 (1.0 ml)

ZETA Corporation
65 N 1st Ave, Ste 202C
Arcadia, CA 91006, USA
Tel: (626) 355-2053
<http://www.zeta-corp.com>



Zeta Corporation



Emergo Europe B.V.
Prinsessegracht 20
2514 AP The Hague
The Netherlands
Tel: +31 70 345 8570