
MUC-1 (Clone ZM35, also known as MRQ-17) Mouse Monoclonal Antibody

Specificity: Human and Mouse. Others not tested

Immunogen: A synthetic peptide from cytoplasmic tail of human MUC-1 protein

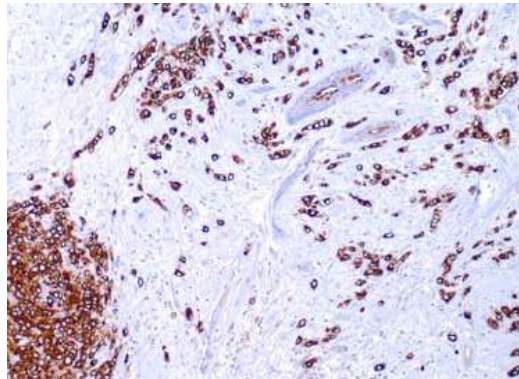
Ig Class: IgG1

Storage: Store vial at 4°C. When stored at 2-8°C, this antibody is stable for 24 months

Staining procedures: Use formalin-fixed and paraffin-embedded sections. *Retrieval conditions:* Pretreatment of deparaffinized tissue with heat-induced epitope retrieval is recommended. *Detection methods:* Polymer anti-mouse/rabbit Ig detection system. *Working dilution:* 1:50-100; *Positive Control:* Breast carcinoma. *Cellular Localization:* Cytoplasmic. *Intended Use:* In vitro diagnosis (IVD).

Description: MUC-1 is a heavily O-glycosylated transmembrane protein expressed on most secretory epithelium, including mammary gland and some hematopoietic cells. It is expressed abundantly in lactating mammary glands and overexpressed abundantly in >90% breast carcinomas and metastases. Transgenic MUC-1 has been shown to associate with all four cebB receptors and localize with erbB1 (EGFR) in lactating glands.

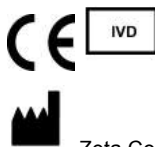
Supplied As: Purified antibody from ascites fluid by Protein G chromatography in 0.2% BSA and 15mM sodium azide.



Formalin-fixed, paraffin-embedded human breast carcinoma stained with anti-MUC-1 antibody using peroxidase-conjugate and DAB chromogen. Note the cytoplasmic staining of tumor cells

Cat. #Z2150 (1.0 ml)

ZETA Corporation
65 N 1st Ave, Ste 202C
Arcadia, CA 91006, USA
Tel: (626) 355-2053
<http://www.zeta-corp.com>



Zeta Corporation



Emergo Europe B.V.
Prinsessegracht 20
2514 AP The Hague
The Netherlands
Tel: +31 70 345 8570