
MSH-6 (Clone ZM99)

Mouse Monoclonal Antibody

Specificity: Human. Others-not tested

Immunogen: Recombinant fragment of human MSH6 protein (around aa 374-540)

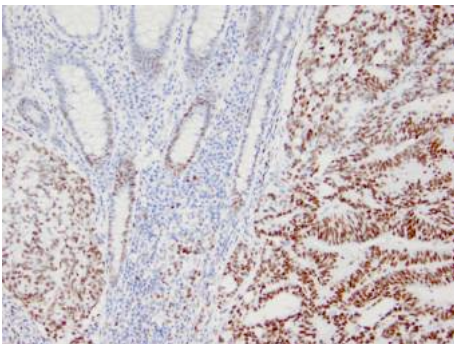
Ig Class: IgG

Storage: Store vial at 4°C. When stored at 2-8°C, this antibody is stable for 24 months

Staining procedures: Use formalin-fixed and paraffin-embedded sections. *Retrieval conditions:* Pretreatment of deparaffinized tissue with heat-induced epitope retrieval is recommended. *Detection methods:* Polymer anti-mouse/rabbit Ig detection system. *Working dilution:* 1:100-200; *Positive Control:* Colon carcinoma. *Cellular Localization:* Nuclear. *Intended Use:* In vitro diagnosis (IVD).

Description: The finding that mutations in DNA mismatch repair genes are associated with hereditary nonpolyposis colorectal cancer (HNPCC) has resulted in considerable interest in the understanding of the mechanism of DNA mismatch repair. Initially, inherited mutations in the MSH2 and MLH1 homologs of the bacterial DNA mismatch repair genes mutS and mutL were demonstrated at high frequency in HNPCC and were shown to be associated with microsatellite instability. A member of the mismatch repair family, GTBP (also designated MSH6), is an MSH2-related protein that binds to DNA containing G/T mismatches. Findings suggest that the mismatch-binding factor in human cells is composed of a heterodimer of GTBP and MSH2.

Supplied As: Purified antibody with 0.2% BSA and 15mM sodium azide.



References:

1. Peltomäki P. *J Clin Oncol.* 2003; 21:1174-9.
2. Lynch H. et al. *Cancer.* 1996; 78:1149-67.
3. Leach, FS, et al. *Cancer Res.* 1996; 56:235-40.

Formalin-fixed, paraffin-embedded human colon carcinoma stained with anti-MSH-6 antibody using peroxidase-conjugate and DAB chromogen. Note the nuclear staining of tumor and normal glandular cells

Cat. #Z2409 (1.0 ml)

ZETA Corporation
65 N 1st Ave, Ste 202C
Arcadia, CA 91006, USA
Tel: (626) 355-2053
<http://www.zeta-corp.com>



Zeta Corporation

Emergo Europe B.V.
Prinsessegracht 20
2514 AP The Hague
The Netherlands
Tel: +31 70 345 8570