
MSH-6 (Clone EP49) Rabbit Monoclonal Antibody

Specificity: Human. Others-not tested

Immunogen: Synthetic peptide corresponding to Human MSH6 aa 1-100 (N terminal)

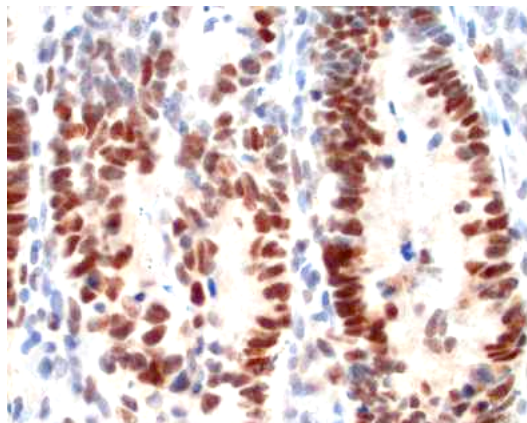
Ig Class: IgG

Storage: Store vial at 4°C. When stored at 2-8°C, this antibody is stable for 24 months

Staining procedures: Use formalin-fixed and paraffin-embedded sections. *Retrieval conditions:* Pretreatment of deparaffinized tissue with heat-induced epitope retrieval is recommended. *Detection methods:* Polymer anti-mouse/rabbit Ig detection system. *Working dilution:* 1:50-100; *Positive Control:* Colon carcinoma. *Cellular Localization:* Nuclear. *Intended Use:* In vitro diagnosis (IVD).

Description: MSH6 is a heterodimer of MSH2 and binds to DNA containing G/T mismatches. The MSH2-MSH6 complex recognizes a single-based mispair insertion/deletion loop. An alteration of microsatellite repeats is the result of slippage owing to strand misalignment during DNA replication and is referred to as microsatellite instability (MSI). These defects in DNA repair pathways have been related human carcinogenesis. Studies have shown the mutations of MLH-1, MSH2 and MSH6 genes contribute to the development of sporadic colorectal carcinoma. The repair of mismatch DNA is essential to maintaining the integrity of genetic information over time. This antibody cross reacts with mouse, rat and dog.

Supplied As: Purified antibody from culture supernatant with 0.2% BSA and 15mM sodium azide.



Formalin-fixed, paraffin-embedded human colon carcinoma stained with anti-MSH-6 antibody using peroxidase-conjugate and DAB chromogen. Note the nuclear staining of tumor cells

Cat. #Z2281 (1.0 ml)

ZETA Corporation
65 N 1st Ave, Ste 202C
Arcadia, CA 91006, USA
Tel: (626) 355-2053
<http://www.zeta-corp.com>



Zeta Corporation



Emergo Europe B.V.
Prinsessegracht 20
2514 AP The Hague
The Netherlands
Tel: +31 70 345 8570