
Muscle Specific Actin (MSA) (Clone HHF35)

Mouse Monoclonal Antibody

Specificity: Human, Rabbit, and Rat. Others-not known

Immunogen: SDS extract of human myocardium

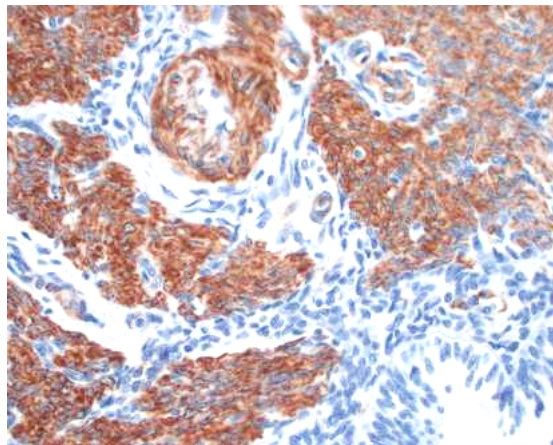
Ig Class: IgG1/ κ

Storage: Store vial at 4°C. When stored at 2-8°C, this antibody is stable for 24 months.

Staining procedures: Use formalin-fixed and paraffin-embedded sections. *Retrieval conditions:* Pretreatment of tissue with proteolytic enzymes should be performed prior to staining. *Detection methods:* Polymer anti-mouse/rabbit Ig detection system. *Working dilution:* 1:200; *Positive Control:* Skeletal muscle. *Cellular Localization:* Cytoplasmic. *Intended Use:* In vitro diagnosis (IVD).

Description: MSA reacts with actin from tissue extracts of uterus, ileum, aorta, diaphragm, heart, and smooth muscle cells. It recognizes the alpha actin from skeletal, cardiac, and smooth muscle and the gamma actin from smooth muscle sources. It stains tumors of smooth muscle (leiomyomas and leiomyosarcomas) as well as skeletal muscle (rhabdomyomas and rhabdomyosarcomas).

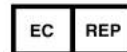
Supplied As: Tissue culture supernatant in 0.2% BSA and 15mM sodium azide.



Formalin-fixed, paraffin-embedded human uterus stained with anti-MSA antibody using peroxidase-conjugate and DAB chromogen. Note the cytoplasmic staining of smooth muscle fibers

Cat. #Z2064 (1.0 ml)

ZETA Corporation
65 N 1st Ave, Ste 202C
Arcadia, CA 91006, USA
Tel: (626) 355-2053
<http://www.zeta-corp.com>



Zeta Corporation

Emergo Europe B.V.
Prinsessegracht 20
2514 AP The Hague
The Netherlands
Tel: +31 70 345 8570