

# MMP-9 (Clone EP127, as known as EP1255Y) Rabbit Monoclonal Antibody

**Specificity:** Human and Guinea pig. Does not react with mouse, rat, or bovine. Others not tested

**Immunogen:** A synthetic peptide corresponding to residues on human MMP-9

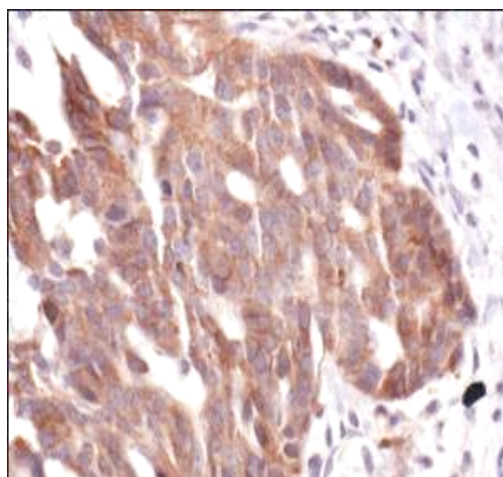
**Ig Class:** Rabbit IgG

**Storage:** Store vial at 4°C. When stored at 2-8°C, this antibody is stable for 24 months.

**Staining procedures:** Use formalin-fixed and paraffin-embedded sections. *Retrieval conditions:* Pretreatment of deparaffinized tissue with heat-induced epitope retrieval is recommended. *Detection methods:* Polymer anti-mouse/rabbit Ig detection system. *Working dilution:* 1:50-100; *Positive Control:* Placenta, or breast carcinoma. *Cellular Localization:* Cytoplasmic. *Intended Use:* In vitro diagnosis (IVD).

**Description:** Metalloproteinases (MMPs) are proteolytic enzymes capable of degrading connective tissue components. They have a common mode of activation, a conserved amino acid sequence in the putative metal binding-active site region, and are inhibited by specific tissue inhibitors of metalloproteinases (TIMPs). MMPs and TIMPs play a significant role in regulating angiogenesis. This antibody reacts with both latent and active MMP-9.

**Supplied As:** Affinity purified antibody from rabbit anti-serum in 0.2% BSA and 15mM sodium azide.



*Formalin-fixed, paraffin-embedded human ovarian carcinoma stained with anti-MMP-9 antibody using peroxidase-conjugate and DAB chromogen. Note the cytoplasmic staining of carcinoma cells*

Cat. #Z2090 (1.0 ml)

