
MMP-2 (Clone CA-4001)

Mouse Monoclonal Antibody

Specificity: Human, mouse and rat

Immunogen: A synthetic peptide derived from near N-terminal of human MMP-2 protein

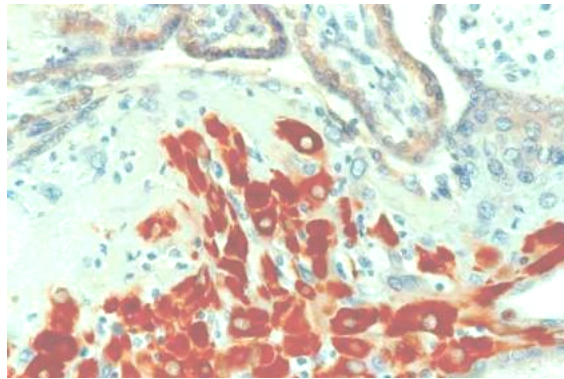
Ig Class: IgG1

Storage: Store vial at 4 °C. When stored at 2-8 °C, this antibody is stable for 24 months.

Staining procedures: Use formalin-fixed and paraffin-embedded sections. *Retrieval conditions:* Pretreatment of deparaffinized tissue with heat-induced epitope retrieval is recommended. *Detection methods:* Polymer anti-mouse/rabbit Ig detection system. *Working dilution:* 1:50; *Positive Control:* Placenta, bladder, breast, and ovarian carcinoma. *Cellular Localization:* Cytoplasmic. *Intended Use:* In vitro diagnosis (IVD).

Description: MMPs are proteolytic enzymes capable of degrading connective tissue components. They have a common mode of activation, a conserved amino acid sequence in the putative metal binding-active site region, and are inhibited by specific tissue inhibitors of metalloproteinases (TIMPs). MMPs and TIMPs play a significant role in regulating angiogenesis. MMP-2 is synthesized as a 631 amino acid proenzyme which is activated by cleavage of the first 80 amino acids. This antibody reacts with both latent and active MMP-2.

Supplied As: Affinity purified antibody from rabbit anti-serum in 0.2% BSA and 15mM sodium azide.



Formalin-fixed, paraffin-embedded human placenta stained with anti-MMP-2 antibody using peroxidase-conjugate and DAB chromogen. Note the cytoplasmic staining of trophoblasts

Cat. #Z2089 (1.0 ml)

ZETA Corporation
65 N 1st Ave, Ste 202C
Arcadia, CA 91006, USA
Tel: (626) 355-2053
<http://www.zeta-corp.com>



Zeta Corporation



Emergo Europe B.V.
Prinsessegracht 20
2514 AP The Hague
The Netherlands
Tel: +31 70 345 8570