

MDR-1 (Clone EP271) Rabbit Monoclonal Antibody

Specificity: Human. Others not tested

Immunogen: A protein fragment corresponding to human MDR1 protein

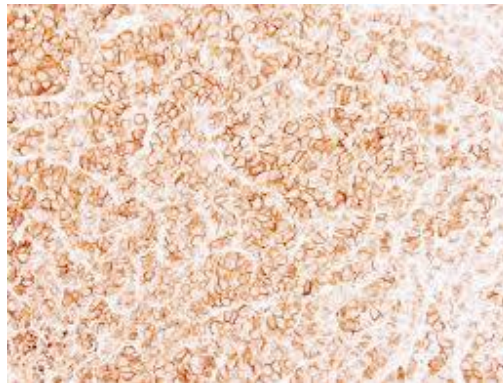
Ig Class: Rabbit IgG

storage: Store vial at 4°C. When stored at 2-8°C, this antibody is stable for 24 months

Staining procedures: Use formalin-fixed and paraffin-embedded sections. *Retrieval conditions:* Pretreatment of deparaffinized tissue with heat-induced epitope retrieval is recommended. *Detection methods:* Polymer anti-mouse/rabbit Ig detection system. *Working dilution:* 1:50-100. *Positive Control:* Colon cancer. *Cellular Localization:* Membrane. *Intended Use:* In vitro diagnosis (IVD).

Description: The multidrug resistance protein 1 (MDR-1), also known as P-glycoprotein 1 (PgP), is a conserved plasma membrane protein that functions as an ATP-dependent efflux pump with broad specificity. MDR-1 expression is thought to cause cross-resistance to structurally unrelated anti-cancer drugs, which may decrease intracellular drug concentrations. MDR-1 is expressed primarily in regions that act as epithelial barriers or perform excretory function in the liver, kidney, gastrointestinal tract, and the blood-brain barrier. In tumors, MDR-1 is widely expressed in many human cancers, commonly found in colon cancer, renal cancer, hepatocellular carcinoma and hematopoietic malignancies.

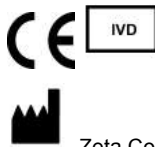
Supplied As: Tissue culture supernatant with 0.2% BSA and 15mM sodium azide.



Formalin-fixed, paraffin-embedded human lung carcinoma stained with anti-MDR-1 antibody using peroxidase-conjugate and DAB chromogen. Note membranous staining of tumor cells

Cat. #Z2278 (1.0 ml)

ZETA Corporation
65 N 1st Ave, Ste 202C
Arcadia, CA 91006, USA
Tel: (626) 355-2053
<http://www.zeta-corp.com>



Zeta Corporation



Emergo Europe B.V.
Prinsessegracht 20
2514 AP The Hague
The Netherlands
Tel: +31 70 345 8570