

---

## MDM2 (Clone ZM68)

### Mouse Monoclonal Antibody

**Specificity:** Human. Others-not known

**Immunogen:** Recombinant human MDM2 protein fragment (around aa 126-254)

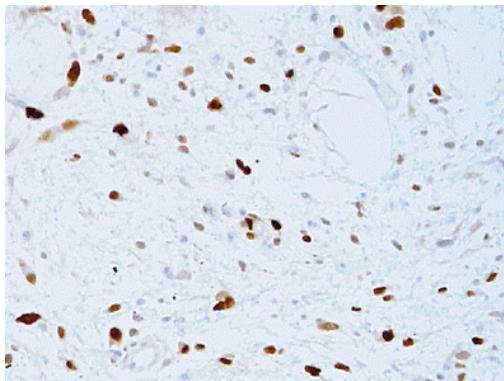
**Ig Class:** IgG1/ $\kappa$

**Storage:** Store vial at 4°C. When stored at 2-8°C, this antibody is stable for 24 months

**Staining procedures:** Use formalin-fixed and paraffin-embedded sections. *Retrieval conditions:* Pretreatment of deparaffinized tissue with heat-induced epitope retrieval is recommended. *Detection methods:* Polymer anti-mouse/rabbit Ig detection system. *Working dilution:* 1:100-200; *Positive Control:* Liposarcoma. *Cellular Localization:* Nuclear. *Intended Use:* In vitro diagnosis (IVD).

**Description:** The MDM2 gene encodes a nuclear-localized E3 ubiquitin ligase. The encoded protein can promote tumor formation by targeting tumor suppressor proteins, such as p53, for proteasomal degradation. This gene is itself transcriptionally-regulated by p53. Overexpression or amplification of this locus is detected in a variety of different cancers. There is a pseudogene for this gene on chromosome 2. Alternative splicing results in a multitude of transcript variants, many of which may be expressed only in tumor cells.

**Supplied As:** Purified antibody with 0.2% BSA and 15mM sodium azide.

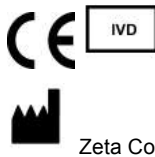


*Formalin-Fixed, paraffin-embedded human dedifferentiated liposarcoma stained with anti-MDM2 antibody using peroxidase-conjugate and DAB chromogen. Note the nuclear staining of tumor cells*

**Cat. #Z2378 (1.0 ml)**

---

**ZETA** Corporation  
65 N 1<sup>st</sup> Ave, Ste 202C  
Arcadia, CA 91006, USA  
Tel: (626) 355-2053  
<http://www.zeta-corp.com>



**Emergo Europe B.V.**  
Prinsessegracht 20  
2514 AP The Hague  
The Netherlands  
Tel: +31 70 345 8570