
MCM3 (Clone EP202)

Rabbit Monoclonal Antibody

Specificity: Human. Others-not tested

Immunogen: Synthetic peptide corresponding to human MCM3

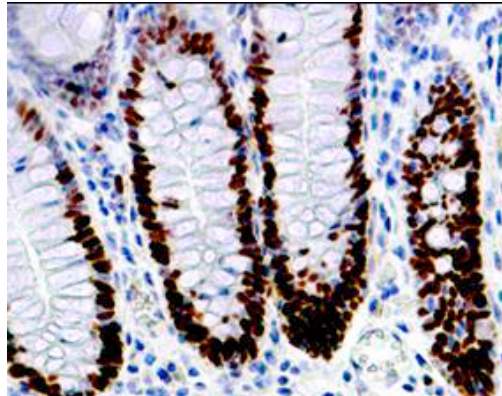
Ig Class: Rabbit IgG

Storage: Store vial at 4°C. When stored at 2-8°C, this antibody is stable for 24 months

Staining procedures: Use formalin-fixed and paraffin-embedded sections. *Retrieval conditions:* Pretreatment of deparaffinized tissue with heat-induced epitope retrieval is recommended. *Detection methods:* Polymer anti-mouse/rabbit Ig detection system. *Working dilution:* 1:50-100; *Positive Control:* Normal colon or colon adenocarcinoma. *Cellular Localization:* Nuclear. *Intended Use:* In vitro diagnosis (IVD).

Description: Minichromosome maintenance protein 3 (MCM3) belongs to the MCM family of highly conserved group of DNA-binding proteins known to have a role in the initiation and regulation of DNA replication during the cell cycle. MCM3 expression is up-regulated in proliferating cells and absent in terminally differentiated cells. Like Ki-67, MCM3 marks proliferating cells. Ki-67 and MCM3 double staining was performed on human tonsil showing that MCM3 stains proliferating cells like Ki-67, and in addition marks cells present in the intermediate layer of epithelium (which are typically negative for Ki-67). Both Ki-67 and MCM3 are not detectable in differentiated cells. However, unlike Ki-67, MCM3 protein down-regulation is delayed. This suggests that Ki-67 may be expressed during a shorter interval of the cell cycle than MCM3. Anti-MCM3 may be a more reliable proliferation marker than anti-Ki-67.

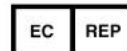
Supplied As: Purified antibody fraction from rabbit anti-serum with 0.2% BSA and 15mM sodium azide.



Formalin-fixed, paraffin-embedded human normal colon mucosa stained with anti-MCM3 antibody using peroxidase-conjugate and DAB chromogen. Note nuclear staining of tumor cells

Cat. #Z2295 (1.0 ml)

ZETA Corporation
65 N 1st Ave, Ste 202C
Arcadia, CA 91006, USA
Tel: (626) 355-2053
<http://www.zeta-corp.com>



Zeta Corporation

Emergo Europe B.V.
Prinsessegracht 20
2514 AP The Hague
The Netherlands
Tel: +31 70 345 8570