
Lysozyme

Rabbit Polyclonal Antibody

Specificity: Human, baboon, monkey, pig, cat, and dog. Does not react with mouse and rat. Others-not known

Immunogen: Human lysozyme purified from the urine of patients with monocytic leukemia

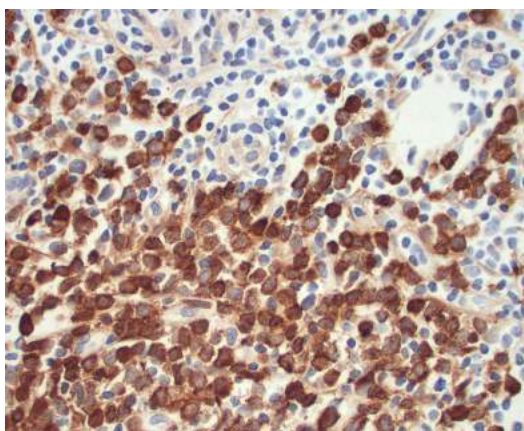
Ig Class: Rabbit IgG

Storage: Store vial at 4°C. When stored at 2-8°C, this antibody is stable for 24 months

Staining procedures: Use formalin-fixed and paraffin-embedded sections. *Retrieval conditions:* Pretreatment of tissue with proteolytic enzymes should be performed prior to staining. *Detection methods:* Polymer anti-mouse/rabbit Ig detection system. *Working dilution:* 1:50-200; *Positive Control:* Myeloid leukemia. *Cellular Localization:* Cytoplasmic. *Intended Use:* In vitro diagnosis (IVD).

Description: Lysozyme is synthesized predominantly in reactive histiocytes rather than in resting, unstimulated phagocytes. The antibody was adsorbed with human plasma and urine proteins to remove the cross-reacting antibodies. Ab-1 labels myeloid cells, histiocytes, granulocytes, macrophages, and monocytes. This antibody is helpful in the identification of myeloid or monocytic nature of acute leukemia.

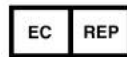
Supplied As: Purified antibody with 0.2% BSA and 15mM sodium azide.



Formalin-fixed, paraffin-embedded human granulocytic sarcoma involving skin stained with anti-lysozyme antibody using peroxidase-conjugate and DAB chromogen. Note the cytoplasmic staining of tumor cells

Cat. #Z2109 (1.0 ml)

ZETA Corporation
65 N 1st Ave, Ste 202C
Arcadia, CA 91006, USA
Tel: (626) 355-2053
<http://www.zeta-corp.com>



Zeta Corporation

Emergo Europe B.V.
Prinsessegracht 20
2514 AP The Hague
The Netherlands
Tel: +31 70 345 8570