

---

# Langerin (Clone 12D6)

## Mouse Monoclonal Antibody

**Specificity:** Human. Others not known

**Immunogen:** Recombinant protein representing the external domain of the Langerin molecule

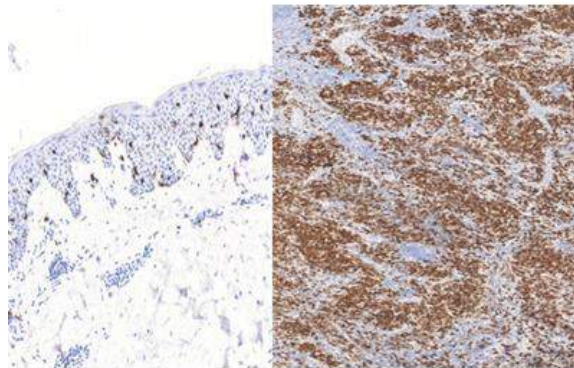
**Ig Class:** IgG2b/ $\kappa$

**Storage:** Store vial at 4°C. When stored at 2-8°C, this antibody is stable for 24 months

**Staining procedures:** Use formalin-fixed and paraffin-embedded sections. *Retrieval conditions:* Pretreatment of deparaffinized tissue with heat-induced epitope retrieval is recommended. *Detection methods:* Polymer anti-mouse/rabbit Ig detection system. *Working dilution:* 1:25-100; *Positive Control:* transitional cell carcinoma. *Cellular Localization:* nuclear. *Intended Use:* In vitro diagnosis (IVD).

**Description:** Langerhans cells (LCs) are a subset of immature dendritic cells (DCs) that specifically localize in the epidermis and other mucosal epithelia. Epidermal LCs possess strong immunostimulatory capacity and play a central role in the initiation and regulation of immune responses. Langerin (CD207) is a Ca<sup>2+</sup>-dependent, C-type lectin domain-containing, type II transmembrane protein that induces epidermal LCs to differentiate into Birbeck granules (BG). BGs are organelles with superimposing and zippering membranes that influence proper class I type antigen presentation to the circulating T-cells. Human spleen, lymph node, thymus, liver, lung and heart express langerin protein. Langerin protein expression has utility in differentiating Langerhans cell histiocytosis from other non-Langerhans cell histiocytic proliferations.

**Supplied As:** Purified antibody in 0.2% BSA and 15mM sodium azide.



*Formalin-fixed, paraffin-embedded human skin (left) and langerhan cell histiocytosis (right) bladder stained with anti-langerin antibody using peroxidase-conjugate and DAB chromogen. Note cytoplasmic staining of langerhan cells (left) and tumor cells (right)*

**Cat. #Z2228 (1.0 ml)**

---

**ZETA** Corporation  
65 N 1<sup>st</sup> Ave, Ste 202C  
Arcadia, CA 91006, USA  
Tel: (626) 355-2053  
<http://www.zeta-corp.com>



Zeta Corporation



**Emergo Europe B.V.**  
Prinsessegracht 20  
2514 AP The Hague  
The Netherlands  
Tel: +31 70 345 8570