
Lambda Light Chain (Clone Lamb14) Mouse Monoclonal Antibody

Specificity: Human. Others-not known

Immunogen: Purified human lambda light chain

Ig Class: IgG1

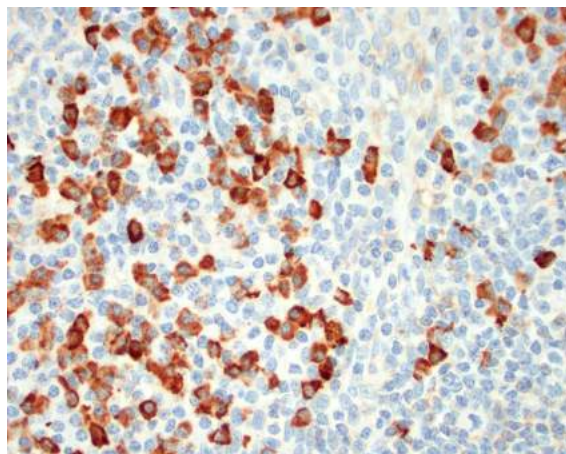
Storage: Store vial at 4°C. When stored at 2-8°C, this antibody is stable for 24 months

Staining procedures: Use formalin-fixed and paraffin-embedded sections. *Retrieval conditions:* Digestion with trypsin, 1mg/ml in PBS, at 37°C for 10 minutes. *Detection methods:* Polymer anti-mouse/rabbit Ig detection system. *Working dilution:* 1:100-500; *Positive Control:* Tonsil. *Cellular Localization:* Cytoplasmic. *Intended Use:* In vitro diagnosis (IVD).

Description: Antibody to the lambda light chain of immunoglobulin is reportedly useful in the identification of leukemias, plasmacytomas, and certain non-Hodgkin's lymphomas. Demonstration of clonality in lymphoid infiltrates indicates that the infiltrate is clonal and therefore malignant.

Comments: Clone Lamb14 is especially designed for sensitive detection of lambda light chain of immunoglobulin.

Supplied As: Purified antibody with 0.2% BSA and 15mM sodium azide.



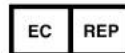
Formalin-fixed, paraffin-embedded human tonsil stained with anti-lambda light chain antibody using peroxidase-conjugate and DAB chromogen. Note cytoplasmic staining of plasma cells

Cat. #Z2130 (1.0 ml)

ZETA Corporation
65 N 1st Ave, Ste 202C
Arcadia, CA 91006, USA
Tel: (626) 355-2053
<http://www.zeta-corp.com>



Zeta Corporation



Emergo Europe B.V.
Prinsessegracht 20
2514 AP The Hague
The Netherlands
Tel: +31 70 345 8570