

LH

Rabbit Polyclonal Antibody

Specificity: Human. Others not tested

Immunogen: Recombinant human LH protein

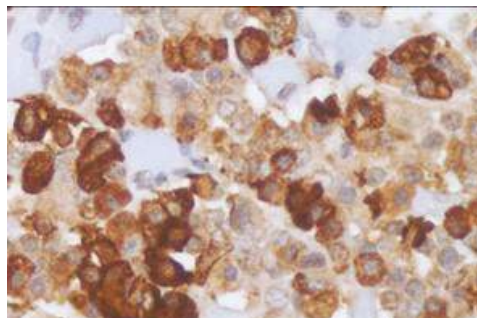
Ig Class: Rabbit IgG

Storage: Store vial at 4°C. When stored at 2-8°C, this antibody is stable for 24 months

Staining procedures: Use formalin-fixed and paraffin-embedded sections. *Retrieval conditions:* Pretreatment of deparaffinized tissue with heat-induced epitope retrieval is recommended. *Detection methods:* Polymer anti-mouse/rabbit Ig detection system. *Working dilution:* 1:50-250; *Positive Control:* Pituitary. *Cellular Localization:* Cytoplasmic. *Intended Use:* In vitro diagnosis (IVD).

Description: Luteinizing hormone (LH) is a glycoprotein. Its structure is similar to the other glycoproteins, follicle-stimulating hormone (FSH), thyroid-stimulating hormone (TSH), and human chorionic gonadotropin (hCG). The luteinizing hormone beta subunit gene is localized in the LHB/CGB gene cluster at chromosome 19q13.32. In contrast to the alpha gene activity, beta LH subunit gene activity is restricted to the pituitary gonadotrophic cells. It is regulated by the gonadotropin releasing hormone from the hypothalamus. Inhibin, activin, and sex hormones do not affect genetic activity for the beta subunit production of LH. In both males and females, LH is essential for reproduction. Mutations in this gene are associated with hypogonadism, which is characterized by infertility and pseudohermaphroditism. Anti-LH is a useful marker in classification of pituitary tumors and the study of pituitary disease. It reacts with LH-producing cells (gonadotrophs).

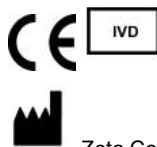
Supplied As: Tissue culture supernatant with 0.2% BSA and 15mM sodium azide.



Formalin-fixed, paraffin-embedded human pituitary adenoma stained with anti-LH antibody using peroxidase-conjugate and DAB chromogen. Note the cytoplasmic staining of tumor cells

Cat. #Z2302 (1.0 ml)

ZETA Corporation
65 N 1st Ave, Ste 202C
Arcadia, CA 91006, USA
Tel: (626) 355-2053
<http://www.zeta-corp.com>



Zeta Corporation



Emergo Europe B.V.
Prinsessegracht 20
2514 AP The Hague
The Netherlands
Tel: +31 70 345 8570