

---

## LEF1 (Clone EP310)

### Rabbit Monoclonal Antibody

**Specificity:** Human. Others-not tested

**Immunogen:** Synthetic peptide corresponding to residues in human LEF1

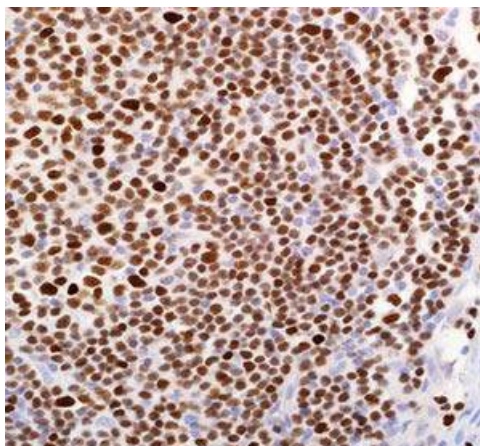
**Ig Class:** Rabbit IgG

**Storage:** Store vial at 4°C. When stored at 2-8°C, this antibody is stable for 24 months

**Staining procedures:** Use formalin-fixed and paraffin-embedded sections. *Retrieval conditions:* Pretreatment of deparaffinized tissue with heat-induced epitope retrieval is recommended. *Detection methods:* Polymer anti-mouse/rabbit Ig detection system. *Working dilution:* 1:50-100; *Positive Control:* CLL/SLL. *Cellular Localization:* Nuclear. *Intended Use:* In Vitro Diagnosis (IVD).

**Description:** Lymphoid Enhancing Factor 1 (LEF1) is a transcription factor that belongs to the TCF/LEF family. LEF1 participates as a regulator in Wnt signaling pathways. LEF1 is an important factor in lymphopoiesis and is expressed normally in T and pro-B cells but not expressed in mature B cells. Strong nuclear expression of LEF1 has been observed in majority of chronic lymphocytic leukemia/small lymphocytic lymphoma cases and LEF1 is not detected in other small B cell lymphomas. Anti-LEF1 may be used as an aid for differentiation of chronic lymphocytic leukemia/small lymphocytic lymphoma from other small B cell lymphomas.

**Supplied As:** Purified antibody with 0.2% BSA and 15mM sodium azide.



*Formalin-fixed, paraffin-embedded human SLL stained with anti-LEF1 using peroxidase conjugate and DAB chromogen. Note nuclear staining of tumor cells*

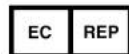
Cat. #Z2333 (1.0 ml)

---

**ZETA** Corporation  
65 N 1<sup>st</sup> Ave, Ste 202C  
Arcadia, CA 91006, USA  
Tel: (626) 355-2053  
<http://www.zeta-corp.com>



Zeta Corporation



**Emergo Europe B.V.**  
Prinsessegracht 20  
2514 AP The Hague  
The Netherlands  
Tel: +31 70 345 8570