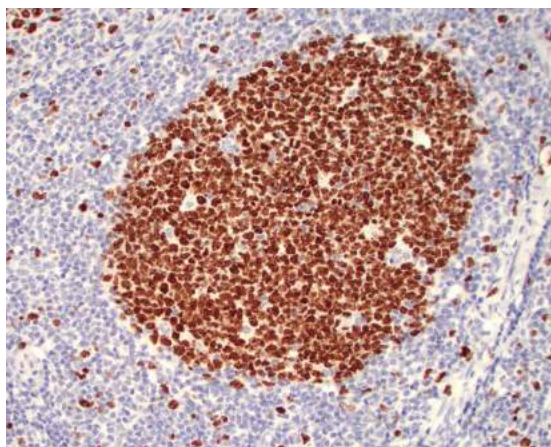

Ki67 (Clone SP6) Rabbit Monoclonal Antibody

- Specificity:** Human and Rat Mouse, Dog, Swine. Others not tested
- Immunogen:** A synthetic peptide derived from the human C-terminus of Ki-67 protein
- Ig Class:** Rabbit IgG
- Storage:** Store vial at 4°C. When stored at 2-8°C, this antibody is stable for 24 months.

Staining procedures: Use formalin-fixed and paraffin-embedded sections. *Retrieval conditions:* Pretreatment of deparaffinized tissue with heat-induced epitope retrieval is recommended. *Detection methods:* Polymer anti-mouse/rabbit Ig detection system. *Working dilution:* 1:100; *Positive Control:* Spleen, tonsil, or breast carcinomas. *Cellular Localization:* Nuclear. *Intended Use:* In vitro diagnosis (IVD).

Description: Ki-67 is a nuclear protein, which is expressed in proliferating cells. Ki-67 is preferentially expressed during late G1-, S-, M-, and G2-phases of the cell cycle, while cells in the G0 (quiescent) phase are negative for this protein.

Supplied As: Tissue culture supernatant with 0.2% BSA and 15mM sodium azide.



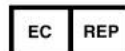
Formalin-fixed, paraffin-embedded human tonsil stained with anti-Ki-67 antibody using peroxidase-conjugate and DAB chromogen. Note the nuclear staining of lymphocytes in a follicle

Cat. #Z2031 (1.0 ml)

ZETA Corporation
65 N 1st Ave, Ste 202C
Arcadia, CA 91006, USA
Tel: (626) 355-2053
<http://www.zeta-corp.com>



Zeta Corporation



Emergo Europe B.V.
Prinsessegracht 20
2514 AP The Hague
The Netherlands
Tel: +31 70 345 8570