

Islet 1 (Clone EP283)

Rabbit Monoclonal Antibody

Specificity: Human. Others not tested

Immunogen: Recombinant fragment within Human Islet 1 aa 1 to the C-terminus

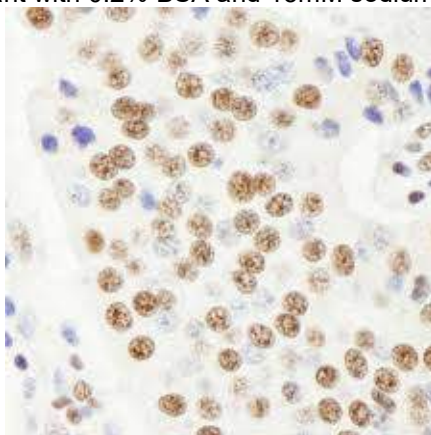
Ig Class: Rabbit IgG

Storage: Store vial at 4°C. When stored at 2-8°C, this antibody is stable for 24 months

Staining procedures: Use formalin-fixed and paraffin-embedded sections. *Retrieval conditions:* Pretreatment of deparaffinized tissue with heat-induced epitope retrieval is recommended. *Detection methods:* Polymer anti-mouse/rabbit Ig detection system. *Working dilution:* 1:50-100; *Positive Control:* Pancreatic neuroendocrine tumor. *Cellular Localization:* Nuclear. *Intended Use:* In vitro diagnosis (IVD).

Description: Islet-1, a human insulin gene enhancer-binding protein, is a transcription factor involved in the differentiation of the neuroendocrine pancreatic cells. Islet-1 plays an important role in the embryogenesis and differentiation of the insulin producing pancreatic beta cells within the islets of Langerhans. Neuroendocrine tumors can arise from a variety of primary sites, most commonly in the bronchopulmonary system, gastrointestinal (GI) tract, and pancreas. Neuroendocrine tumors of the GI tract and pancreas tend to be slow growing and indolent, and may metastasize to the liver before it is detected. Islet-1 exhibits strong nuclear staining in the islets of normal pancreas and tumor cells of the pancreatic neuroendocrine tumor. Islet-1 has been shown to be a reliable marker for the detection of primary and metastatic pancreatic neuroendocrine neoplasms.

Supplied As: Tissue culture supernatant with 0.2% BSA and 15mM sodium azide.



Formalin-fixed, paraffin-embedded pancreatic neuroendocrine tumor stained with anti-Islet 1 antibody using peroxidase-conjugate and DAB chromogen. Note nuclear staining of tumor cells

Cat. #Z2297 (1.0 ml)

ZETA Corporation
65 N 1st Ave, Ste 202C
Arcadia, CA 91006, USA
Tel: (626) 355-2053
<http://www.zeta-corp.com>



Zeta Corporation



Emergo Europe B.V.
Prinsessegracht 20
2514 AP The Hague
The Netherlands
Tel: +31 70 345 8570