

Insulin (Clone EP125)

Rabbit Monoclonal Antibody

Specificity: Human. Others not tested

Immunogen: Recombinant fragment within Human Insulin aa 1 to the C-terminus

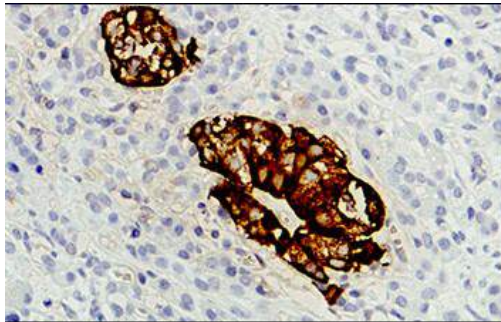
Ig Class: Rabbit IgG

Storage: Store vial at 4°C. When stored at 2-8°C, this antibody is stable for 24 months

Staining procedures: Use formalin-fixed and paraffin-embedded sections. *Retrieval conditions:* Pretreatment of deparaffinized tissue with heat-induced epitope retrieval is recommended. *Detection methods:* Polymer anti-mouse/rabbit Ig detection system. *Working dilution:* 1:50-100; *Positive Control:* Normal pancreas. *Cellular Localization:* Cytoplasmic. *Intended Use:* In vitro diagnosis (IVD).

Description: Insulin is a hormone that regulates glucose homeostasis. It increases cell permeability to monosaccharides, amino acids and fatty acids, and it accelerates glycolysis, the pentose phosphate cycle, and glycogen synthesis in liver. It is synthesized in the beta cell in pancreatic islets. The antibody labels both normal and neoplastic insulin-producing cells. It is useful in identifying insulinoma.

Supplied As: Tissue culture supernatant with 0.2% BSA and 15mM sodium azide.



Formalin-fixed, paraffin-embedded human insulinoma stained with anti-insulin antibody using peroxidase-conjugate and DAB chromogen. Note the cytoplasmic staining of tumor cells

Cat. #Z2298 (1.0 ml)

ZETA Corporation
65 N 1st Ave, Ste 202C
Arcadia, CA 91006, USA
Tel: (626) 355-2053
<http://www.zeta-corp.com>



Zeta Corporation



Emergo Europe B.V.
Prinsessegracht 20
2514 AP The Hague
The Netherlands
Tel: +31 70 345 8570