

## Inhibin $\alpha$ (Clone R1) Mouse Monoclonal Antibody

**Specificity:** Human, cow and pig (weak). Others not known

**Immunogen:** A synthetic peptide corresponding to aa1-32 of human inhibin alpha subunit

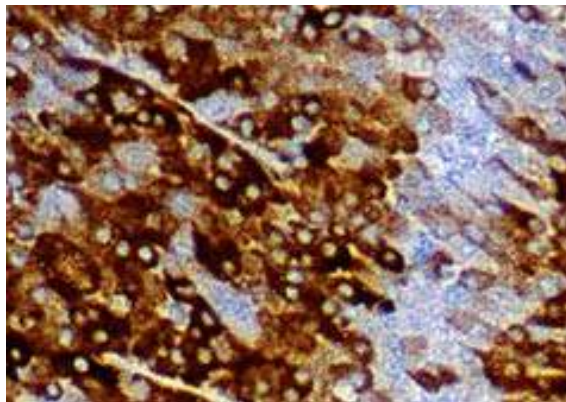
**Ig Class:** IgG<sub>2a</sub> /  $\kappa$

**Storage:** Store vial at 4°C. When stored at 2-8°C, this antibody is stable for 24 months.

**Staining procedures:** Use formalin-fixed and paraffin-embedded sections. *Retrieval conditions:* Pretreatment of deparaffinized tissue with heat-induced epitope retrieval is recommended. *Detection methods:* Polymer anti-mouse/rabbit Ig detection system. *Working dilution:* 1:10-100; *Positive Control:* Adrenal cortex, placenta, testis, corpus luteum. *Cellular Localization:* Cytoplasmic. *Intended Use:* In vitro diagnosis (IVD).

**Description:** Inhibin is a dimeric glycoprotein hormone from TGF-beta family made up of alpha and beta subunits. It inhibits the production of follicle-stimulating hormone from pituitary while actively stimulates the production of FSH. It is suggested that inhibin may act as a gonadal tumor suppressor.

**Supplied As:** Purified antibody with 0.2% BSA and 15mM sodium azide.



*Formalin-fixed, paraffin-embedded human corpus luteum stained with anti-inhibin antibody using peroxidase-conjugate and DAB chromogen. Note the cytoplasmic staining of luteal cells*

Cat. #Z2115 (1.0 ml)

**ZETA** Corporation  
65 N 1<sup>st</sup> Ave, Ste 202C  
Arcadia, CA 91006, USA  
Tel: (626) 355-2053  
<http://www.zeta-corp.com>



Zeta Corporation



**Emergo Europe B.V.**  
Prinsessegracht 20  
2514 AP The Hague  
The Netherlands  
Tel: +31 70 345 8570