

IgG4 (Clone ZM49, also known as MRQ-44) Mouse Monoclonal Antibody

Specificity: Human. Others-not known

Immunogen: Synthetic human IgG4

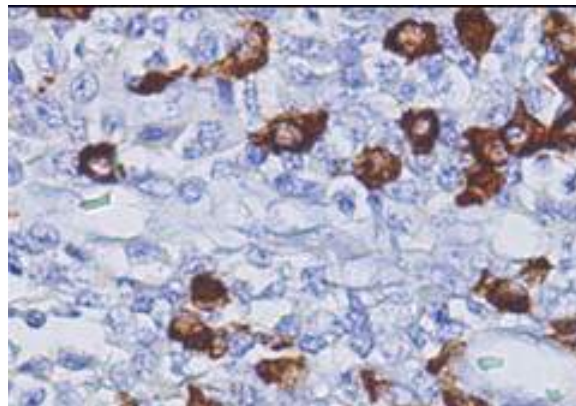
Ig Class: IgG1/κ

Storage: Store vial at 4°C. When stored at 2-8°C, this antibody is stable for 24 months.

Staining procedures: Use formalin-fixed and paraffin-embedded sections. *Retrieval conditions:* Pretreatment of deparaffinized tissue with heat-induced epitope retrieval is recommended. *Detection methods:* Polymer anti-mouse/rabbit Ig detection system. *Working dilution:* 1:100; *Positive Control:* Tonsil. *Cellular Localization:* Cytoplasmic. *Intended Use:* In vitro diagnosis (IVD).

Description: IgG4-related sclerosing disease has been recognized as a systemic disease entity characterized by an elevated serum IgG4 level, sclerosing fibrosis and diffuse lymphoplasmacytic infiltration with the presence of many IgG4-positive plasma cells. As these patients tend to respond favorably to steroid treatment, it is important to recognize this entity and differentiate it from such mimics as lymphoma. Clinical manifestations are apparent in the pancreas, bile duct, gallbladder, lacrimal gland, salivary gland, retroperitoneum, kidney, lung, breast, thyroid, and prostate. Immunohistochemical analyses in the case of IgG4-related sclerosing disease not only exhibits significantly more IgG4-positive plasma cells in affected tissues but also significantly higher IgG4/ IgG ratios (typically > 30%)

Supplied As: Tissue culture supernatant in 0.2% BSA and 15mM sodium azide.



Formalin-fixed, paraffin-embedded human tonsil stained with anti-IgG4 antibody using peroxidase-conjugate and DAB chromogen. Note the cytoplasmic staining of plasma cells

Cat. #Z2170 (1.0 ml)