

---

# IgG

## Rabbit Polyclonal Antibody

**Specificity:** Human. Others not tested

**Immunogen:** Purified IgG

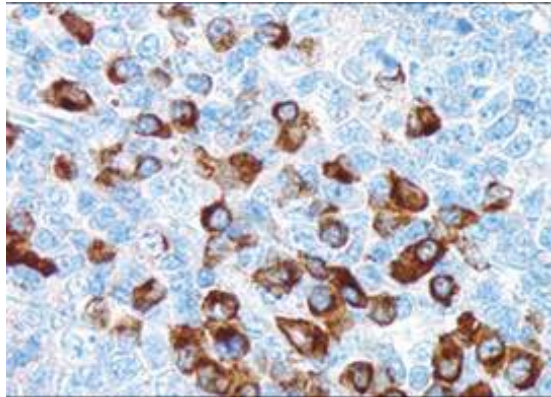
**Ig Class:** Rabbit IgG

**Storage:** Store vial at 4°C. When stored at 2-8°C, this antibody is stable for 24 months

**Staining procedures:** Use formalin-fixed and paraffin-embedded sections. *Retrieval conditions:* Pretreatment of deparaffinized tissue with heat-induced epitope retrieval is recommended. *Detection methods:* Polymer anti-mouse/rabbit immunoglobulin detection system. *Working dilution:* 1:50-200; *Positive Control:* Lymph node. *Cellular Localization:* Cytoplasmic. *Intended Use:* In vitro Diagnosis (IVD).

**Description:** Anti-IgG antibody reacts with surface immunoglobulin IgG gamma chains. This antibody is useful when identifying leukemias, plasmacytomas, and B-cell lineage derived Hodgkin's lymphomas. Due to the restricted expression of heavy and light chains in these diseases, demonstration of B-cell lymphomas is possible with clonal gene rearrangement studies.

**Supplied As:** Purified antibody with 0.2% BSA and 15mM sodium azide.



*Formalin-fixed, paraffin-embedded human lymph node stained with anti-IgG antibody using peroxidase-conjugate and DAB chromogen. Note cytoplasmic staining of plasma cells*

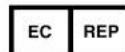
**Cat #: Z2213 (1.0 ml)**

---

**ZETA** Corporation  
65 N 1<sup>st</sup> Ave, Ste 202C  
Arcadia, CA 91006, USA  
Tel: (626) 355-2053  
<http://www.zeta-corp.com>



Zeta Corporation



**Emergo Europe B.V.**  
Prinsessegracht 20  
2514 AP The Hague  
The Netherlands  
Tel: +31 70 345 8570