
IgD

Rabbit Polyclonal Antibody

Specificity: Human. Others not tested

Immunogen: Purified IgD

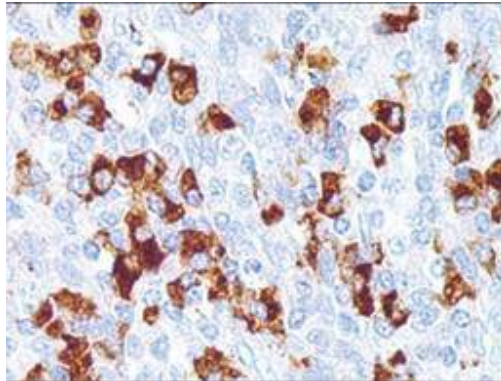
Ig Class: Rabbit IgG

Storage: Store vial at 4°C. When stored at 2-8°C, this antibody is stable for 24 months

Staining procedures: Use formalin-fixed and paraffin-embedded sections. *Retrieval conditions:* Pretreatment of deparaffinized tissue with heat-induced epitope retrieval is recommended. *Detection methods:* Polymer anti-mouse/rabbit immunoglobulin detection system. *Working dilution:* 1:50-200; *Positive Control:* Lymph node. *Cellular Localization:* Cytoplasmic. *Intended Use:* In vitro diagnosis (IVD).

Description: Anti-IgD antibody reacts with surface immunoglobulin IgD delta chains. This antibody is useful when identifying leukemias, plasmacytomas, and B-cell lineage derived lymphomas (in particular Marginal Zone Lymphoma). Cytoplasmic staining is easily identified on paraffin tissue. Surface immunoglobulin is difficult to demonstrate on paraffin sections but can be demonstrated on frozen sections.

Supplied As: Purified antibody with 0.2% BSA and 15mM sodium azide.



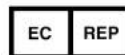
Formalin-fixed, paraffin-embedded human lymph node stained with anti-IgD antibody using peroxidase-conjugate and DAB chromogen. Note cytoplasmic staining of plasma cells

Cat #: Z2212 (1.0 ml)

ZETA Corporation
65 N 1st Ave, Ste 202C
Arcadia, CA 91006, USA
Tel: (626) 355-2053
<http://www.zeta-corp.com>



Zeta Corporation



Emergo Europe B.V.
Prinsessegracht 20
2514 AP The Hague
The Netherlands
Tel: +31 70 345 8570