
INSM1 (Clone ZM15) Mouse Monoclonal Antibody

Specificity: Human. Others-not tested.

Immunogen: Recombinant full-length human INSM1 protein

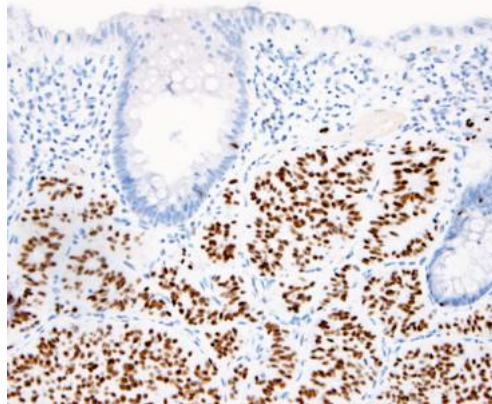
Ig Class: IgG2b/k

Storage: Store vial at 4°C. When stored at 2-8°C, this antibody is stable for 24 months

Staining procedures: Use formalin-fixed and paraffin-embedded sections. *Retrieval conditions:* Pretreatment of deparaffinized tissue with heat-induced epitope retrieval is recommended. *Detection methods:* Polymer anti-mouse/rabbit Ig detection system. *Working dilution:* 1:100-200. *Positive Control:* Neuroendocrine tumor. *Cellular Localization:* Nuclear. *Intended Use:* In vitro diagnosis (IVD).

Description: INSM1 protein contains both a zinc finger DNA-binding domain and a putative pro-hormone domain. It is expressed in embryonic tissues undergoing neuroendocrine differentiation. It is not expressed in normal adult tissues but is highly expressed in neuroendocrine tumors. INSM1 acts as a transcriptional repressor of the Neuro D promoter and recruits cyclin D1 as a corepressor. It is required for normal differentiation of pancreatic endocrine cells. Inhibition of INSM1 results in decreased formation of Glucagon and Insulin positive cells. INSM1 is a sensitive marker for neuroendocrine differentiation of human lung tumors.

Supplied As: Purified Tissue culture supernatant in 0.2% BSA and 15mM sodium azide.



Formalin-fixed, paraffin-embedded human gastric low-grade neuroendocrine tumor stained with anti-INSM1 antibody using peroxidase-conjugate and DAB chromogen Note the nuclear staining of tumor cells

Cat. #Z2358 (1.0 ml)

ZETA Corporation
65 N 1st Ave, Ste 202C
Arcadia, CA 91006, USA
Tel: (626) 355-2053
<http://www.zeta-corp.com>



Zeta Corporation



Emergo Europe B.V.
Prinsessegracht 20
2514 AP The Hague
The Netherlands
Tel: +31 70 345 8570