
INSM1 (Clone A-8)

Mouse Monoclonal Antibody

Specificity: Human. Others-not tested.

Immunogen: Amino acid 81-125 at the N-terminus of human INSM1

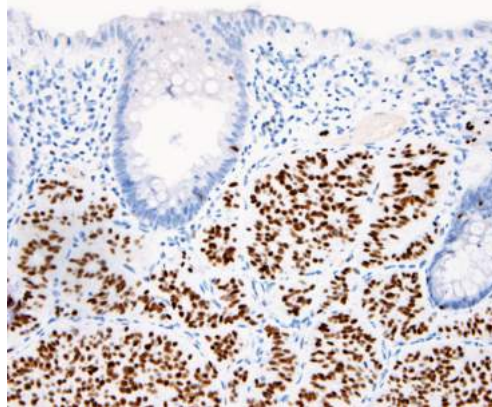
Ig Class: IgG₁/κ

Storage: Store vial at 4°C. When stored at 2-8°C, this antibody is stable for 24 months

Staining procedures: Use formalin-fixed and paraffin-embedded sections. *Retrieval conditions:* Pretreatment of deparaffinized tissue with heat-induced epitope retrieval is recommended. *Detection methods:* Polymer anti-mouse/rabbit Ig detection system. *Working dilution:* 1:50-100. *Positive Control:* Neuroendocrine tumor. *Cellular Localization:* Nuclear. *Intended Use:* In vitro diagnosis (IVD).

Description: Insulinoma-associated protein 1 (INSM1) is a developmentally regulated zinc-finger transcription factor. It localizes to the nucleus and is expressed in embryonic issues undergoing neuroendocrine differentiation. INSM1 is not expressed in normal adult tissues but can be found highly expressed in neuroendocrine tumors. INSM1 is positive in 95% of lung small cell carcinoma and 91% of lung large cell neuroendocrine carcinoma, compared with 75% and 78% with the combined panel of traditional neuroendocrine markers (synaptophysin, chromogranin, and CD56). INSM1 stains 100% of the atypical carcinoids, typical carcinoids and paragangliomas, but only 3% of adenocarcinomas and 4% of squamous cell carcinomas. Therefore, INSM1 is sensitive and specific to be a single first-line pan-neuroendocrine marker.

Supplied As: Purified Tissue culture supernatant in 0.2% BSA and 15mM sodium azide.



Formalin-fixed, paraffin-embedded human gastric low-grade neuroendocrine tumor stained with anti-INSM1 antibody using peroxidase-conjugate and DAB chromogen Note the nuclear staining of tumor cells

Cat. #Z2330 (1.0 ml)

ZETA Corporation
65 N 1st Ave, Ste 202C
Arcadia, CA 91006, USA
Tel: (626) 355-2053
<http://www.zeta-corp.com>



Zeta Corporation

Emergo Europe B.V.
Prinsessegracht 20
2514 AP The Hague
The Netherlands
Tel: +31 70 345 8570