
INI-1 (Clone 25)

Mouse Monoclonal Antibody

Specificity: Human. Other not known

Immunogen: Mouse BAF47 aa.257-359

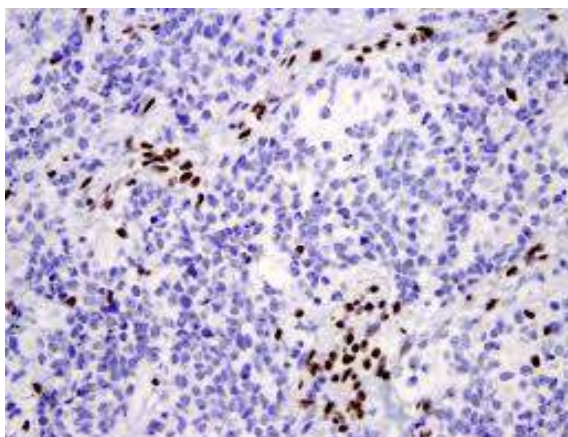
Ig Class: IgG2 α

Storage: Store vial at 4°C. When stored at 2-8°C, this antibody is stable for 24 months

Staining procedures: Use formalin-fixed and paraffin-embedded sections. *Retrieval conditions:* Pretreatment of deparaffinized tissue with heat-induced epitope retrieval is recommended. *Detection methods:* Polymer anti-mouse/rabbit Ig detection system. *Working dilution:* 1:50-100. *Positive Control:* Brain or astrocytoma. *Cellular Localization:* Nuclear. *Intended Use:* In vitro diagnosis (IVD).

Description: The INI-1 gene, which encodes a functionally uncharacterized protein component of the hSWI/SNF chromatin remodeling complex, is often mutated or deleted in malignant rhabdoid tumor (MRT). Two isoforms of INI-1, that differ by the variable inclusion of amino acids, potentially are produced by differential RNA splicing. The morphology of MRTs can present challenges in differential diagnosis. The overall survival of MRTs relative to its potential mimics (medulloblastoma, supratentorial primitive neuroectodermal tumors (sPNETs)) is quite low, and thus differentiation from these other tumors is desirable. Lack of nuclear labeling by anti-INI-1 is characteristic of MRT. The majority of medulloblastomas and sPNETs are labeled by anti-INI-1. MRTs also originate from the kidney and soft tissues.

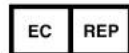
Supplied As: Purified antibody in 0.2% BSA and 15mM sodium azide.



Formalin-fixed, paraffin-embedded human rhabdoid tumor stained with anti-INI-1 antibody using peroxidase-conjugate and DAB. Note the nuclear staining of stromal/endothelial cells and absence of staining of tumor cells

Cat. #Z2177 (1.0 ml)

ZETA Corporation
65 N 1st Ave, Ste 202C
Arcadia, CA 91006, USA
Tel: (626) 355-2053
<http://www.zeta-corp.com>



Emergo Europe B.V.
Prinsessegracht 20
2514 AP The Hague
The Netherlands
Tel: +31 70 345 8570