

---

## IMP3 (Clone EP286) Rabbit Monoclonal Antibody

**Specificity:** Human

**Immunogen:** Recombinant fragment within Human IMP3

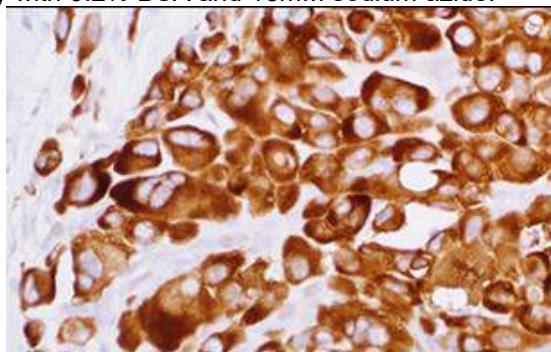
**Ig Class:** Rabbit IgG

**Storage:** Store vial at 4°C. When stored at 2-8°C, this antibody is stable for 24 months

**Staining procedures:** Use formalin-fixed and paraffin-embedded sections. *Retrieval conditions:* Pretreatment of deparaffinized tissue with heat-induced epitope retrieval is recommended. *Detection methods:* Polymer anti-mouse/rabbit Ig detection system. *Working dilution:* 1:50-100; *Positive Control:* Pancreatic ductal adenocarcinoma. *Cellular Localization:* Cytoplasmic. *Intended Use:* In vitro diagnosis (IVD).

**Description:** Insulin-like growth factor II mRNA binding protein 3 (IMP3) is an oncofetal RNA-binding protein that regulates targets such as insulin-like growth factor-2 and beta-actin. IMP3 plays a major role in early embryogenesis involving the development of the intestine, thymus, pancreas, and kidneys. IMP3 mRNA transcript and protein have been demonstrated in high levels in pancreatic cancer tissues but not in benign lesions of the pancreas, chronic pancreatitis, or normal pancreatic tissues. IMP3 can be used to distinguish between pancreatic ductal adenocarcinoma from chronic sclerosing pancreatitis. IMP3 expression has also been found in a variety of other human cancers including renal cell carcinoma, adenocarcinoma of the uterine cervix, endometrial carcinoma, adenocarcinoma of the esophagus, malignant melanoma, Merkel cell carcinoma, urothelial carcinoma, neuroendocrine carcinoma of the lung, adenocarcinoma of the pancreas, and triple negative breast cancer.

**Supplied As:** Purified antibody with 0.2% BSA and 15mM sodium azide.



*Formalin-fixed, paraffin-embedded human pancreatic ductal adenocarcinoma stained with anti-IMP3 antibody using peroxidase-conjugate and DAB chromogen. Note cytoplasmic staining of tumor cells*

**Cat. #Z2284 (1.0 ml)**

---

**ZETA** Corporation  
65 N 1<sup>st</sup> Ave, Ste 202C  
Arcadia, CA 91006, USA  
Tel: (626) 355-2053  
<http://www.zeta-corp.com>



Zeta Corporation



**Emergo Europe B.V.**  
Prinsessegracht 20  
2514 AP The Hague  
The Netherlands  
Tel: +31 70 345 8570