
HepPar-1 (Clone OCH1E5)

Mouse Monoclonal Antibody

Specificity: Human. Others not known

Immunogen: Formalin fixed failed human allograft liver that was mechanically disrupted actual price paid for the product.

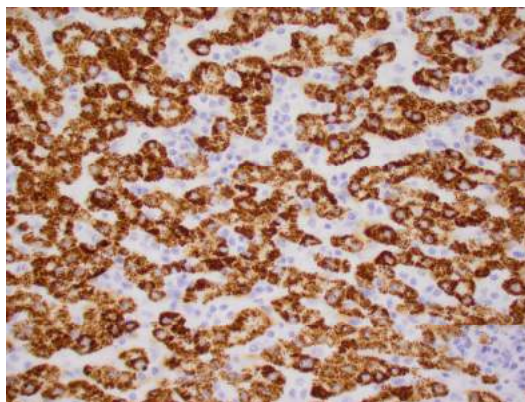
Ig Class: IgG₁ / κ

Storage: Store vial at 4°C. When stored at 2-8°C, this antibody is stable for 24 months

Staining procedures: Use formalin-fixed and paraffin-embedded sections. *Retrieval conditions:* Pretreatment of deparaffinized tissue with heat-induced epitope retrieval is recommended. *Detection methods:* Polymer anti-mouse/rabbit Ig detection system. *Working dilution:* 1:100; *Positive Control:* Hepatocellular carcinoma. *Cellular Localization:* Cytoplasmic. *Intended Use:* In vitro diagnosis (IVD).

Description: Clone OCH1E5 is useful in studying hepatocellular tumors. It may be useful in differentiating clear cell hepatocellular carcinomas from other clear cell malignancies. It has been shown in the literature to be useful in differentiating hepatoblastoma of embryonal type from small round cell tumors of childhood. OCH1e5 labels an antigen in the mitochondrial fraction of the liver homogenates.

Supplied As: Tissue culture supernatant 0.2% BSA and 15mM sodium azide.



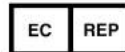
Formalin-fixed, paraffin-embedded human liver stained with anti-HepPar-1 antibody using peroxidase-conjugate and DAB chromogen. Note the cytoplasmic staining of hepatocytes

Cat. #Z2087 (1.0 ml)

ZETA Corporation
65 N 1st Ave, Ste 202C
Arcadia, CA 91006, USA
Tel: (626) 355-2053
<http://www.zeta-corp.com>



Zeta Corporation



Emergo Europe B.V.
Prinsessegracht 20
2514 AP The Hague
The Netherlands
Tel: +31 70 345 8570