

Herpes Simplex Virus Type 1 (Clone 10A3) Mouse Monoclonal Antibody

Species Reactivity: Human. Others not tested

Immunogen: Detergent-solubilized herpes simplex virus (HSV) type 1 infected cells

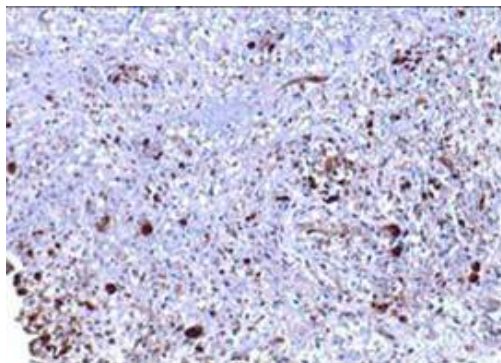
Ig Class: IgG1/κ

Storage: Store vial at 4°C. When stored at 2-8°C, this antibody is stable for 24 months

Staining procedures: Use formalin-fixed and paraffin-embedded sections. *Retrieval conditions:* Pretreatment of deparaffinized tissue with heat-induced epitope retrieval is recommended. *Detection methods:* Polymer anti-mouse/rabbit Ig detection system. *Working dilution:* 1:50-200; *Positive Control:* HSV infected tissue. *Cellular Localization:* Cytoplasmic or nuclear. *Intended Use:* Analyte Specific Reagent (ASR).

Description: The antibody reacts with HSV type 1 specific antigens and with antigens common for HSV types 1 and 2. The antibody reacts with all the major glycoproteins present in the viral envelope and at least one core protein as determined by crossed immunoelectrophoresis. It is well-suited for detection of HSV in human cellular material obtained from superficial lesions or biopsies and for the early identification of HSV in infected tissue cultures

Supplied As: Purified antibody with 0.2% BSA and 15mM sodium azide.



Formalin-fixed, paraffin-embedded human skin with HSV infection stained with anti-HSV I antibody using peroxidase-conjugate and DAB chromogen. Note cytoplasmic/nuclear staining of infected hepatocytes

Cat #: Z2215 (1.0 ml)

