

HPV (Clone K1H8) Mouse Monoclonal Antibody

Specificity: Human. Others not known

Immunogen: Alkaline disrupted HPV type 1

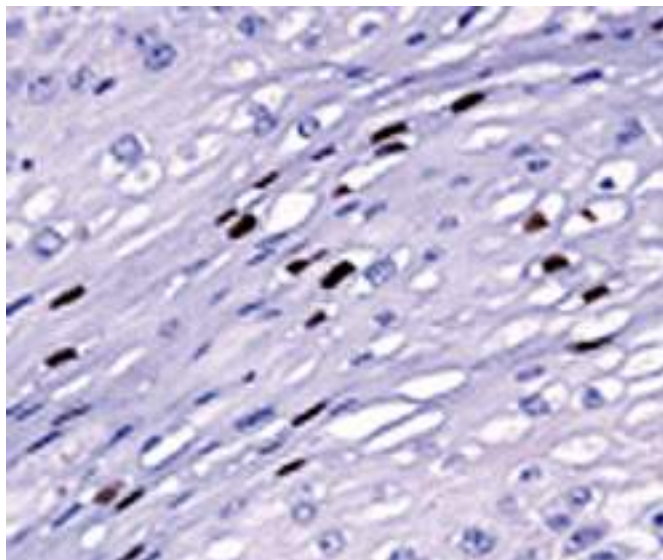
Ig Class: IgG_{1/k}

Storage: Store vial at 4°C. When stored at 2-8°C, this antibody is stable for 24 months.

Staining procedures: Use formalin-fixed and paraffin-embedded sections. *Retrieval conditions:* Pretreatment of deparaffinized tissue with heat-induced epitope retrieval is recommended. *Detection methods:* Polymer anti-mouse/rabbit Ig detection system. *Working dilution:* 1:20; *Positive Control:* HAV infected cells of tissue. *Cellular Localization:* Nuclei of infected cells. *Intended Use:* Analyte Specific Reagent (ASR).

Description: Human papilloma virus is non-enveloped double stranded circular DNA virus with icosahedral capsid. Clone K1H8 reacts with human papilloma virus type 6, 11, 16, 18, 31, 33, 42, 51, 52, 56 and 58.

Supplied As: Purified antibody with 0.2% BSA and 15mM sodium azide.



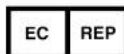
Formalin-fixed, paraffin-embedded human cervical carcinoma stained with anti-HPV antibody using peroxidase-conjugate and DAB chromogen. Note the nuclear staining of carcinoma cells

Cat. #Z2201 (1.0 ml)

ZETA Corporation
65 N 1st Ave, Ste 202C
Arcadia, CA 91006, USA
Tel: (626) 355-2053
<http://www.zeta-corp.com>



Zeta Corporation



Emergo Europe B.V.
Prinsessegracht 20
2514 AP The Hague
The Netherlands
Tel: +31 70 345 8570