

---

## ***c-erbB-2 / HER-2/neu (Clone EP3)*** Rabbit Monoclonal Antibody

**Specificity:** Human. Others not tested

**Immunogen:** Synthetic peptide within Human ErbB 2 aa 1200 to the C-terminus (C terminal)

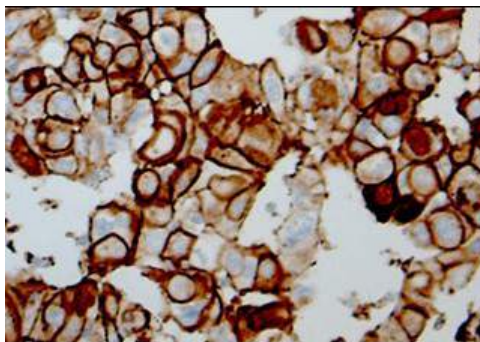
**Ig Class:** Rabbit IgG

**Storage:** Store vial at 4°C. When stored at 2-8°C, this antibody is stable for 24 months.

**Staining procedures:** Use formalin-fixed and paraffin-embedded sections. *Retrieval conditions:* Pretreatment of deparaffinized tissue with heat-induced epitope retrieval is recommended. *Detection methods:* Polymer anti-mouse/rabbit Ig detection system. *Working dilution:* 1:100-200. *Positive Control:* Breast carcinomas. *Cellular Localization:* Cell membrane. *Intended Use:* In vitro diagnosis (IVD).

**Description:** *c-erbB-2* is a receptor tyrosine kinase of the *c-erbB* family. It is closely related in structure to the epidermal growth factor receptor. *c-erbB-2* oncoprotein is detectable in a proportion of breast and other adenocarcinomas, as well as transitional cell carcinomas. In the case of breast cancer, expression determined by immunohistochemistry has been shown to be associated with poor prognosis.

**Supplied As:** Tissue culture supernatant with 0.2% BSA and 15mM sodium azid.



*Formalin-fixed, paraffin-embedded breast carcinoma stained with anti-Her-2/neu antibody using peroxidase-conjugate and DAB chromogen. Note the strong membrane staining (3+) of carcinoma cells*

**Cat. #Z2025E (1.0 ml)**

---

**ZETA** Corporation  
65 N 1<sup>st</sup> Ave, Ste 202C  
Arcadia, CA 91006, USA  
Tel: (626) 355-2053  
<http://www.zeta-corp.com>



Zeta Corporation



**Emergo Europe B.V.**  
Prinsessegracht 20  
2514 AP The Hague  
The Netherlands  
Tel: +31 70 345 8570