
HER-2/neu (Clone ZR5)

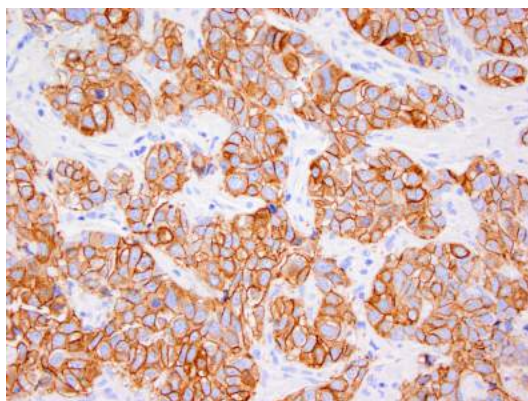
Rabbit Monoclonal Antibody

Specificity:	Human. Others not tested
Immunogen:	Recombinant protein encoding extracellular domain of human <i>c-erbB2</i>
Ig Class:	Rabbit IgG
Storage:	Store vial at 4°C. When stored at 2-8°C, this antibody is stable for 24 months.

Staining procedures: Use formalin-fixed and paraffin-embedded sections. *Retrieval conditions:* Pretreatment of deparaffinized tissue with heat-induced epitope retrieval is recommended. *Detection methods:* Polymer anti-mouse/rabbit Ig detection system. *Working dilution:* 1:200-300. *Positive Control:* Breast carcinomas. *Cellular Localization:* Cell membrane. *Intended Use:* In Vitro Diagnosis (IVD).

Description: *c-erbB-2* is a receptor tyrosine kinase of the *c-erbB* family. It is closely related in structure to the epidermal growth factor receptor. *c-erbB-2* oncoprotein is detectable in a proportion of breast and other adenocarcinomas, as well as transitional cell carcinomas. In the case of breast cancer, expression determined by immunohistochemistry has been shown to be associated with poor prognosis.

Supplied As: Tissue culture supernatant with 0.2% BSA and 15mM sodium azide.



Formalin-fixed, paraffin-embedded breast infiltrating ductal carcinoma stained with anti-Her-2/neu antibody using peroxidase-conjugate and DAB chromogen. Note the strong membrane staining (3+) of carcinoma cells

Cat. #Z2025 (1.0 ml)

ZETA Corporation
65 N 1st Ave, Ste 202C
Arcadia, CA 91006, USA
Tel: (626) 355-2053
<http://www.zeta-corp.com>



Zeta Corporation



Emergo Europe B.V.
Prinsessegracht 20
2514 AP The Hague
The Netherlands
Tel: +31 70 345 8570