
HER-2/neu (Clone ZM142)

Mouse Monoclonal Antibody

Specificity: Human. Others not tested

Immunogen: Recombinant human HER-2 protein fragment (around aa 311-462)

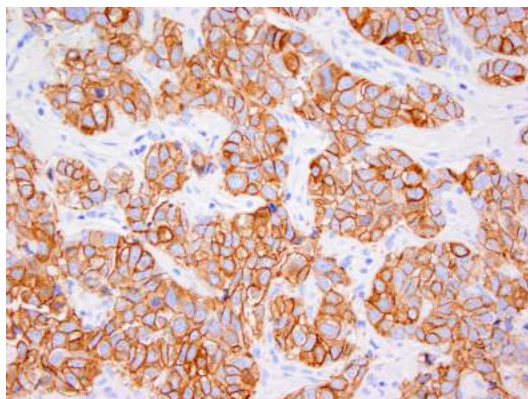
Ig Class: IgG/κ

Storage: Store vial at 4°C. When stored at 2-8°C, this antibody is stable for 24 months.

Staining procedures: Use formalin-fixed and paraffin-embedded sections. *Retrieval conditions:* Pretreatment of deparaffinized tissue with heat-induced epitope retrieval is recommended. *Detection methods:* Polymer anti-mouse/rabbit Ig detection system. *Working dilution:* 1:100-200. *Positive Control:* Breast carcinomas. *Cellular Localization:* Cell membrane. *Intended Use:* In Vitro Diagnosis (IVD).

Description: Recognizes a protein of 185kDa, which is identified as *c-erbB-2/HER-2/neu*. Its epitope is localized in the extracellular domain. C-erbB-2/HER-2 is a member of the EGFR family. This MAb is specific and shows minimal cross-reaction with other members of the EGFR-family. Receptors of this family are located on the plasma membrane and consist of an extracellular ligand-binding domain that is connected to a large intracellular domain by a single transmembrane sequence. *c-erbB-2/HER-2* protein is over-expressed in a variety of carcinomas especially those of breast and ovary.

Supplied As: Tissue culture supernatant with 0.2% BSA and 15mM sodium azide.



Formalin-fixed, paraffin-embedded breast infiltrating ductal carcinoma stained with anti-Her-2/neu antibody using peroxidase-conjugate and DAB chromogen. Note the strong membrane staining (3+) of carcinoma cells

Cat. #Z2453 (1.0 ml)

ZETA Corporation
65 N 1st Ave, Ste 202C
Arcadia, CA 91006, USA
Tel: (626) 355-2053
<http://www.zeta-corp.com>



Zeta Corporation



Emergo Europe B.V.
Prinsessegracht 20
2514 AP The Hague
The Netherlands
Tel: +31 70 345 8570