
HCG (Clone CG04 + CG05)

Mouse Monoclonal Antibodies

Specificity: Human. Others-not known

Immunogen: Purified Beta-subunit of HCG

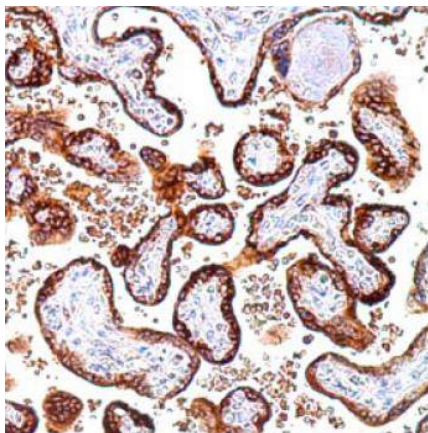
Ig Class: IgG2a/ κ +IgG1/ κ

Storage: Store vial at 4°C. When stored at 2-8°C, this antibody is stable for 24 months

Staining procedures: Use formalin-fixed and paraffin-embedded sections. *Retrieval conditions:* Pretreatment of deparaffinized tissue with heat-induced epitope retrieval is recommended. *Detection methods:* Polymer anti-mouse/rabbit Ig detection system. *Working dilution:* 1:50-100; *Positive Control:* Placenta or choriocarcinoma. *Cellular Localization:* Cytoplasmic. *Intended Use:* In vitro diagnosis (IVD).

Description: Human Chorionic Gonadotropin (HCG) is a glycoprotein, which is secreted in large quantities by normal trophoblasts. It is present only in trace amounts in non-pregnant urine and sera but rises sharply during pregnancy. HCG is composed of two non-identical, non-covalently linked polypeptide chains designated as the alpha- and Beta-subunits. The alpha-subunit of HCG is nearly identical to that of thyroid stimulating hormone (TSH), follicle stimulating hormone (FSH), and luteinizing hormone (LH). A germ cell tumor which is positive for cytokeratin, placental alkaline phosphatase (PLAP), and HCG but negative for EMA and AFP is probably a choriocarcinoma.

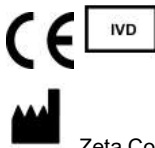
Supplied As: Purified antibody from in 0.2% BSA and 15mM sodium azide.



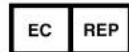
Formalin-fixed, paraffin-embedded human placenta stained with anti-HCG-beta antibody using peroxidase-conjugate and DAB chromogen. Note the cytoplasmic staining of trophoblasts

Cat. #Z2108 (1.0 ml)

ZETA Corporation
65 N 1st Ave, Ste 202C
Arcadia, CA 91006, USA
Tel: (626) 355-2053
<http://www.zeta-corp.com>



Zeta Corporation



Emergo Europe B.V.
Prinsessegracht 20
2514 AP The Hague
The Netherlands
Tel: +31 70 345 8570