

## *Helicobacter pylori* Rabbit Polyclonal Antibody

**Immunogen:** Total lysate of *Helicobacter pylori*

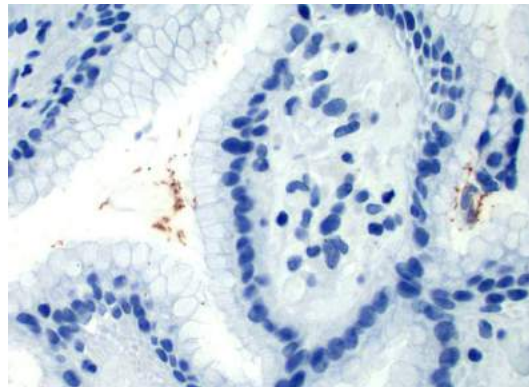
**Ig Class:** Rabbit IgG

**Storage:** Store vial at 4°C. When stored at 2-8°C, this antibody is stable for 24 months

**Staining procedures:** Use formalin-fixed and paraffin-embedded sections. *Retrieval conditions:* Pretreatment of deparaffinized tissue with heat-induced epitope retrieval is recommended. *Detection methods:* Polymer anti-mouse/rabbit Ig detection system. *Working dilution:* 1:100-200; *Positive Control:* *Helicobacter pylori* infected tissue. *Intended Use:* Analyte Specific Reagent (ASR).

**Description:** *Helicobacter pylori* is known to cause peptic ulcers and chronic gastritis in human. It is associated with duodenal ulcers and may be involved in development of adenocarcinoma and low grade lymphoma of mucosa associated lymphoid tissue in the stomach.

**Supplied As:** Total IgG purified from rabbit anti-serum by Protein A chromatography in 0.2% BSA and 15mM sodium azide.



*Formalin-fixed, paraffin-embedded human stomach stained with anti-H. pylori antibody using peroxidase-conjugate and DAB chromogen. Note intense staining of H. Pylori organisms on the surface of gastric epithelial cells*

**Cat. #Z2046 (1.0 ml)**

**ZETA** Corporation  
65 N 1<sup>st</sup> Ave, Ste 202C  
Arcadia, CA 91006, USA  
Tel: (626) 355-2053  
<http://www.zeta-corp.com>



Zeta Corporation



**Emergo Europe B.V.**  
Prinsessegracht 20  
2514 AP The Hague  
The Netherlands  
Tel: +31 70 345 8570