
Granzyme B

Epitope Specific Rabbit Antibody

Specificity: Human, Mouse and Rat. Others not tested

Immunogen: A synthetic peptide from N-terminus of human Granzyme B

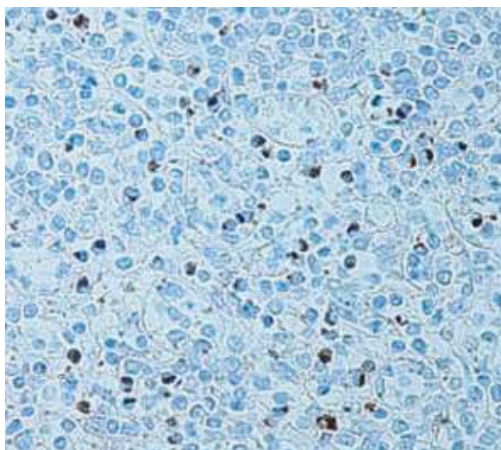
Ig Class: Rabbit IgG

Storage: Store vial at 4°C. When stored at 2-8°C, this antibody is stable for 24 months

Staining procedures: Use formalin-fixed and paraffin-embedded sections. *Retrieval conditions:* Pretreatment of deparaffinized tissue with heat-induced epitope retrieval is recommended. *Detection methods:* Polymer anti-mouse/rabbit Ig detection system. *Working dilution:* 1:50; *Positive Control:* Tonsil. *Cellular Localization:* Granular cytoplasmic. *Intended Use:* In Vitro Diagnosis (IVD).

Description: Granzyme A and granzyme B are serine proteases that mediate apoptotic signaling in cytotoxic T lymphocytes (CTL) and in natural killer (NK) cells. Both granzyme A and granzyme B are synthesized as inactive proenzymes, and they are stored within cytolytic granules and released by effector cells during degradation. This antibody should be useful for the localization of granzyme B-containing lytic granules and for the characterization of activated CTLs or NK cells.

Supplied As: Tissue culture supernatant in 0.2% BSA and 15mM sodium azide.



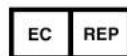
Formalin-fixed, paraffin-embedded human tonsil stained with anti-granzyme B antibody using peroxidase-conjugate and DAB chromogen. Note cytoplasmic granular staining of cytotoxic T-cells

Cat. #Z2145 (1.0 ml)

ZETA Corporation
65 N 1st Ave, Ste 202C
Arcadia, CA 91006, USA
Tel: (626) 355-2053
<http://www.zeta-corp.com>



Zeta Corporation



Emergo Europe B.V.
Prinsessegracht 20
2514 AP The Hague
The Netherlands
Tel: +31 70 345 8570