
Granzyme B (Clone EP230) Rabbit Monoclonal Antibody

Specificity: Human, Mouse and Rat. Others not tested

Immunogen: Synthetic peptide corresponding to Human Granzyme B aa 150-250.

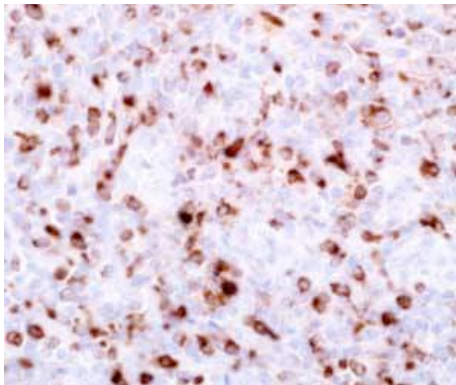
Ig Class: Rabbit IgG

Storage: Store vial at 4°C. When stored at 2-8°C, this antibody is stable for 24 months

Staining procedures: Use formalin-fixed and paraffin-embedded sections. *Retrieval conditions:* Pretreatment of deparaffinized tissue with heat-induced epitope retrieval is recommended. *Detection methods:* Polymer anti-mouse/rabbit Ig detection system. *Working dilution:* 1:50-100; *Positive Control:* Tonsil. *Cellular Localization:* Granular cytoplasmic. *Intended Use:* In Vitro Diagnosis (IVD).

Description: Granzyme B is a member of the granule serine protease family stored specifically in NK cells or cytotoxic T cells. Cytolytic T lymphocytes (CTL) and natural killer (NK) cells share the ability to recognize, bind, and lyse specific target cells. They are thought to protect their host by lysing cells bearing on their surface 'nonself' antigens, usually peptides or proteins resulting from infection by intracellular pathogens. Granzyme B is crucial for the rapid induction of target cell apoptosis by CTLs in the cell-mediated immune response. Granzyme B is useful as a marker in the identification of NK/T-cell lymphomas in conjunction with CD56.

Supplied As: Purified antibody with 0.2% BSA and 15mM sodium azide.



References:

1. Kummer JA, et al. *Clin Exp Immunol.* 1995; 100:164-72.
2. Oudejans JJ, et al. *Am J Pathol.* 1996; 148:233-40.
3. Liu J, et al. *J Dermatol.* 2003; 30:735-41.

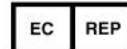
Formalin-fixed, paraffin-embedded human lymph node stained with anti-granzyme B antibody using peroxidase-conjugate and DAB chromogen. Note cytoplasmic granular staining of cytotoxic T-cells

Cat. #Z2510 (1.0 ml)

ZETA Corporation
65 N 1st Ave, Ste 202C
Arcadia, CA 91006, USA
Tel: (626) 355-2053
<http://www.zeta-corp.com>



Zeta Corporation



Emergo Europe B.V.
Prinsessegracht 20
2514 AP The Hague
The Netherlands
Tel: +31 70 345 8570