

Glypican-3 (Clone 1G12)

Mouse Monoclonal Antibody

Specificity: Human. Others not tested

Immunogen: A fragment containing the last 70 amino acids of the core glypican-3 protein.

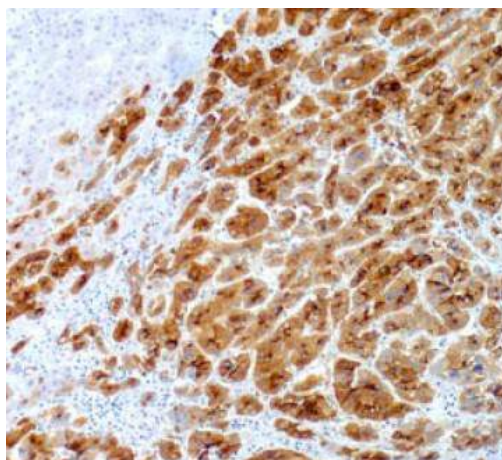
Ig Class: Mouse IgG1

Storage: Store vial at 4°C. When stored at 2-8°C, this antibody is stable for 24 months.

Staining procedures: Use formalin-fixed and paraffin-embedded sections. *Retrieval conditions:* Pretreatment of deparaffinized tissue with heat-induced epitope retrieval is recommended. *Detection methods:* Polymer anti-mouse/rabbit Ig detection system. *Working dilution:* 1:100-200. *Positive Control:* Hepatocellular carcinoma. *Cellular Localization:* Cytoplasmic and membrane. *Intended Use:* In vitro diagnosis (IVD).

Description: Glypican-3 (GPC3) is a member of the glypican family of glycosyl phosphatidylinositol-anchored cell-surface heparan sulfate proteoglycans. The 1G12 monoclonal antibody has been used to assess GPC3 expression in malignant and nonmalignant liver tissue samples by immunohistochemistry in formalin-fixed and paraffin-embedded tissue. Studies have shown that GPC3 is expressed at the protein level in most hepatocellular carcinomas, but it is undetectable in normal liver and benign hepatic lesions, including dysplastic and cirrhotic nodules. In addition, GPC3 is significantly elevated in the serum of a large proportion of patients with hepatocellular carcinoma. Based on these results, it has been proposed that GPC3 could be a useful marker to differentiate between benign and malignant liver diseases.

Supplied As: Tissue culture supernatant in 0.2% BSA and 15mM sodium azide.



Formalin-fixed, paraffin-embedded human hepatocellular carcinoma stained with anti-GPC3 antibody using peroxidase-conjugate and DAB chromogen. Note membranous and granular cytoplasmic staining of tumor cells

Cat. #Z2103 (1.0 ml)